



HWH

Wormbete Simmentals 10th On-Property Sale

*50 Years of Moving Forward
1972 - 2022*

Wednesday, 14th September 2022 at 1pm



LOT 32

**WORMBETE
SUPERSONIC S54 (PP)**



LOT 14

**WORMBETE
STANFORD S135 (PP)**



LOT 24

**WORMBETE
SAMPSON S99 (P)**



Registered Simmentals since 1972



Our Stud Philosophy

Breed balanced, fertile, robust, easy doing, structurally sound and commercially relevant Simmental cattle that are proven for longevity and performance.

Uphold the principles of integrity, honesty and transparency in our actions, and in our liaison with clients and other breeders.

Responsibly manage our land, soil and water with a focus on livestock health and efficient and productive management.

Be pleased but not complacent, focused but with vision, educated but still willing to learn.

First & Foremost...A Warm Welcome

2022 has brought a year of change and opportunity, and is one that we embrace and also celebrate with 2022 marking 50 years of Wormbete Simmentals - an achievement that we as a family and a business are extremely proud of.

When we put together a catalogue of bulls and heifers we want to ensure that each and every one is an animal that you would be proud to have in your herd, making their positive, efficient and progressive phenotypic and genetic contribution for years to come. We firmly believe this sale catalogue encompasses just that, and is one that we present to you with the utmost pride and knowledge.

We are excited to be offering progeny from a battery of new young sires including Lancaster LCS Powerful P333 and Lancaster Magnum Q202, plus our elite homebred sires Wormbete Parliamentarian P185, President P181 and Prime Minister P22. Also in the draft are sons of leading AI sires including Sunny Valley Canon 86E and Murdeduke Quarterback Q011. These bulls combined bring a powerful mix of top genetics and are all backed up by superior, quality dam lines.

Maternal most definitely matters, with fertility the golden key to a productive herd. It is here that our females stand up and stand out, displaying longevity and efficiency by putting their everything into their calves, getting back in calf quickly without fuss or favour, and efficiently weaning magnificent, well grown calves at an early age. We run them in sizeable contemporary groups to gain the benefits of better comparisons between their performance and breeding efficiency, as well as the utilisation of pasture and grazing crops across our properties. To put it simply - they are quite superb!

We remain committed to our stud philosophy and breeding protocols, ensuring we make focused, considered and relevant decisions to breed cattle that have eye appeal, structure and phenotype as well as meeting the all important benchmarks of efficient and profitable beef production. We run our cattle with a commercial focus, using good old fashioned cattle sense, whilst valuing the importance of measuring performance and sustainability, whether it be the business itself or the animals, crops, pastures or natural capital within it.

The quality assurance of our cattle is as important to us as it is to you. As such, all sale animals are backed up by a thorough complement of performance data, independent structural and docility assessments plus rigorous health and fertility checks.

Thank you for your interest in and support of our program. We welcome your enquiry and are here to assist to help ensure the selection of the right animal to meet your breeding and business needs.

Best Regards, *John, Nicole, Mim & Judy*



SALE INFORMATION

Wormbete Simmentals 10th On Property Sale

1pm, Wednesday
14th September 2022
Inspections from 10am

Inspections prior to sale day are very welcome
Please contact John or the selling agents to arrange

"Allawah" ILLABO NSW

offering

- 48 Simmental & SimAngus Bulls -

and

- 13 Simmental Heifers -

HHH

John & Nicole Hopkins

0427 102 748

hopkinspastoral@bigpond.com

www.wormbetesimmentals.com.au

Selling Agents

Bid Online

Nutrien
Livestock™

AuctionsPlus
Australia's Livestock Marketplace

Tim Woodham

0436 015 115

James Croker

0427 753 533

02 9262 4222

Keep Up To Date on



SALE CATALOGUE DISCLAIMER

All reasonable care has been taken in ensuring the information provided in this catalogue is correct at the time of publication. The vendors take no responsibility for the accuracy, reliability and/or interpretation of the information supplied in this brochure. Purchasers must satisfy themselves that the livestock offered meets individual requirements. The vendors retain the right to use photographs and/or information held on particular animals now and into the future.

SAFETY DISCLAIMER

The owners, employees and representatives of Wormbete Simmentals accept no liability for any accidents that may occur at the Allawah Sale Complex. Although such occurrences are extremely rare, any persons attending the Wormbete Simmental Sale do so at their own risk.

DIRECTIONS

The sale will be held on property at "Allawah" 340 Allawah Road ILLABO, which is located 7kms south east of the village of Illabo. From Illabo, turn over the railway line and veer left towards Eurongilly and travel south east on Eurongilly Road for approximately 4kms then turn left into Allawah Road and travel 3.4kms to "Allawah". The property entrance is located on the right. Allawah is located 70kms north east of Wagga Wagga, 25kms north east of Junee and 35kms south west of Cootamundra.

TRANSPORT

As part of our service we offer FREE CARTAGE:

- to buyers residing within a 100km radius of the Allawah sale complex.
- along the major routes from Illabo to Dubbo in the north and from Illabo to Wodonga in the south.
- to Roma and Toowoomba and major selling centres enroute for any registered individual buyer who purchases three (3) or more sale lots at auction.
- to Victoria, South Australia, New South Wales, Western Australia and Australian Capital Territory to the closest major selling centre for any registered individual buyer who purchases three (3) or more sale lots at auction.

All transport to major centres will be co-ordinated by Lockie Falls of Falls Livestock Transport ph: 0429 826 342. To facilitate this service, Buyers Instructions Slips with transport instructions in writing must be completed post sale.

REBATE

Selling agents are Nutrien Livestock. Outside agents are entitled to a 3% rebate under the **following strict conditions**:

- introducing the buyer in writing to the selling agents or vendor at least 24 hours prior to the sale, and
- the agent who has provided the introduction must attend the sale with their client or on their client(s) behalf.

TRANSFER

All sale cattle are registered with Simmental Australia and are eligible for transfer to your ownership. Please advise on your bidding registration sheet.

INSURANCE

We recommend insuring your purchases at the fall of the hammer. A Nutrien Insurance representative will be present on sale day to assist with this. All cattle are at the purchaser's risk from the fall of the hammer.

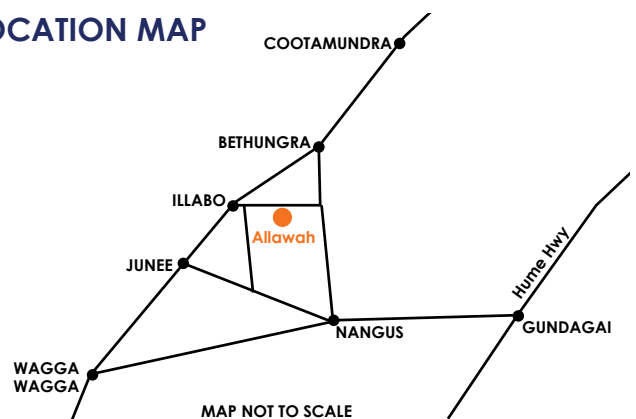
GST

All lots are sold exclusive of GST.

ACCOMMODATION

A wide range of accommodation options are available in the nearby towns Junee, Cootamundra, Gundagai and Wagga Wagga.

LOCATION MAP



BIDDING & AUCTIONS PLUS

If you are unable to make it to Illabo, the sale will be interfaced on Auctions Plus. Please see Page 8 for details on how to register and bid using the Auctions Plus platform.

Phone bidding can be arranged by contacting John or Nutrien agents Tim Woodham and James Croker.

PHOTOS & VIDEOS OF SALE LOTS

Videos and pedigree links for sale lots will be available on Auctions Plus prior to sale day. Photos and video links will also be posted on our Facebook and Instagram pages as well as the Wormbete Simmentals website.

SALE DAY CATERING

A welcoming morning tea, BBQ lunch and cold drinks will be available on sale day with our compliments. Covid Safe serving practices will be in place for the health of everyone.

SAFETY OF VISITORS

When entering sale pens, please ensure your safety by taking note of your surrounds and do not crowd sale animals.

Persons under the age of 16 should not enter sale pens. All animals being offered for sale are selected for their quiet temperament under normal yard handling and paddock conditions, however sale day is not considered a normal day in the life of a bull or heifer. We would like you to be aware of this and kindly request that you use common sense when in the pens. We do not envisage any problems on sale day but feel it is our duty of care to advise you of the importance of respecting our policy of always practicing the responsible husbandry of cattle.

IN-HERD SEMEN RIGHT

Wormbete reserves the right to collect semen from any bull catalogued for sale for in-herd use only. Any collection will be arranged at a time convenient to the purchaser with every care taken to minimise any risk to the health of the bull. All expenses will be met by us.

J-BAS ACCREDITATION

Wormbete is an accredited J-BAS Status 7 herd.

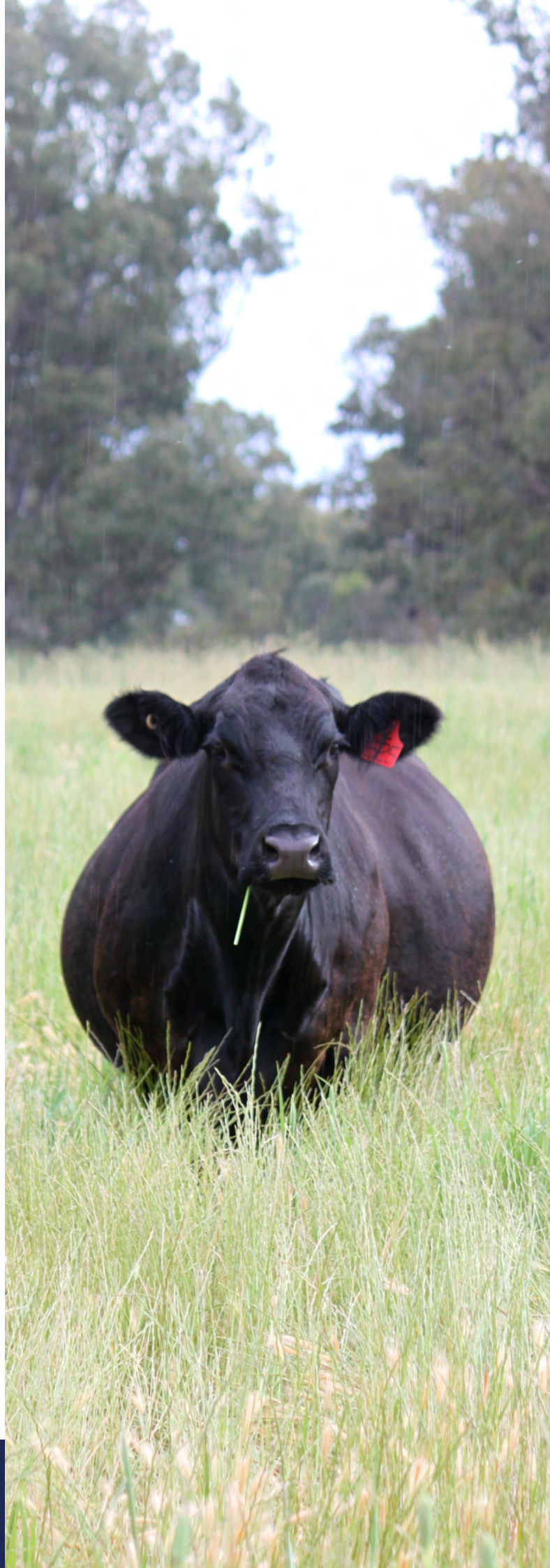
Our triennial sample check (faecal) was undertaken in April 2022 by Dr. Yvette Cameron-Cook, Cootamundra Veterinary Clinic and forms part of our current and updated Biosecurity Plan.

GUARANTEE

To the best of our knowledge all of the cattle are in sound working order at the time of the sale and have been independently evaluated for fertility and structural soundness.

Following the sale, it is important that normal care be taken and good husbandry practices be observed with regard to the management of your valuable purchase. In the rare event of a bull proving to be infertile or incapable of natural service within 6 months of the purchase date, the vendor will credit the purchase price, less the salvage of the bull, provided the problem is not caused by injury, illness or disease incurred after taking delivery.

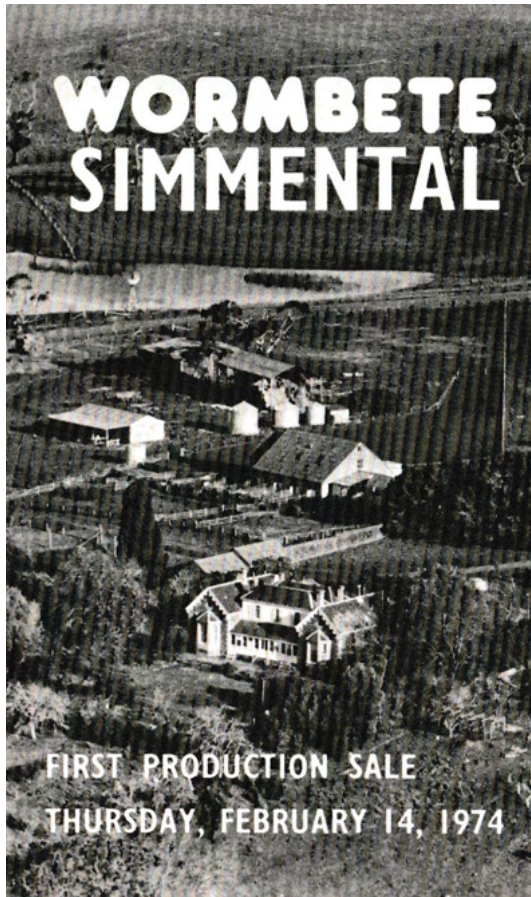
Claims must be accompanied by a relevant veterinary certificate. We retain the right to obtain an independent veterinary confirmation of any claim.



**TO ENSURE YOU HAVE A CATALOGUE ON SALE
DAY PLEASE BRING THIS ONE WITH YOU. THANKS!**

Wormbete Simmentals - from Winchelsea to Illabo

The Front, Inside and Back Pages of the first Wormbete Sale Catalogue from 1974



WHAT CAN THE SIMMENTAL BREED OFFER YOU?

There are many good breeds of cattle in the world today, but there are no other breeds in our opinion that have so much to offer the Australian beef producer as the Simmental with its outstanding milking ability, growth rate and fleshing characteristics.

To select for any one of these qualities in a breeding programme would take years to achieve, whereas the Simmental has each and everyone of these NOW, making it unique for balanced beef production.

AIM OF THE WORMBETE STUD

There are a number of different types of Simmental cattle in the world. Our aim is not to choose one of these, but to select for an AUSTRALIAN SIMMENTAL.

Australian cattle breeders have already proven that they are capable of breeding cattle equal to any others in the world.

It has been our plan to take advantage of the many great cattle of different breeds and use them as foundation females, thus providing the stud with outstanding genetic material and, what is equally important, genetic variation in a breeding programme based solely on Artificial Insemination.

We feel that the Australian Simmental breeder has a unique opportunity in being able to use any breed of his choice on which to found his stud, thus making it possible for him to blend the many desirable characteristics of particular breeds. To achieve this, we at Wormbete travelled both interstate and into many parts of Victoria to purchase the best available cattle for our programme.

It is a long term breeding programme and we are delighted with the first results.

Please scan the QR Code to watch Our Story Celebrating 50 Years of Wormbete Simmentals



or visit our website to view



Buyers at Newmarket in November 1973 saw the first Simmental cross steer vealers offered in Victoria, when the Wormbete Simmental Stud offered thirteen Simmental cross steers. The steers averaged 8½ months of age and sold to a top of \$188, averaging \$177. The average live weight of the steers was 776 lbs. Many favourable comments were passed as to the way they killed out and the quality of the meat.

"My Faith in the Simmental breed has never wavered. It has all the traits we would wish to have; milk, growth, muscle and considerable fertility. All this in one breed."

Henry W.W. Hopkins







AuctionsPlus

How to Register and Bid on AuctionsPlus

1

Go to www.auctionsplus.com.au to register at least 48 hours before the sale.

2

Select “**Sign Up**” in the top right hand corner.

3

Fill out your name, mobile number, email address and create a password.

4

Go to your emails and confirm the account.

5

Return to AuctionsPlus and log in.

6

Select “**Dashboard**” and then select “**Request Approval to Buy**”.

7

Fill in buyer details and once completed go back to Dashboard.

8

Complete buyer induction module (approx. 30 minutes).

9

AuctionsPlus will email you to let you know that your account has been approved.

10

Log in on sale day and connect to auction.

11

Bid using the two-step process – unlock the bid button and bid at that price.

12

If you are successful, the selling agent will contact you post sale to organise delivery and payment.

For more information please contact us on:

Phone: (02) 9262 4222

Email: info@auctionsplus.com.au

THE 2022 BULLS AND HEIFERS

All the Details

WHERE THEY'VE BEEN RUNNING

The bulls have been here on Allawah since birth. They were weaned in March and have been run together as one contemporary group.

The heifers at the foot of their dams were moved to our Frampton property, Moatefield in December 2021. They were weaned in March and have been running with their heifer contemporaries until their selection for this sale after which they returned to Allawah in June.

WHAT THEY'VE BEEN EATING

There is nothing fancy or extreme in the preparation of these cattle for sale day as our plan is for them to leave our property and move to yours fit, mobile and ready to work. They are not pumped or pampered and the result are bulls and heifers bred for resilience, fertility and longevity. Everything they have eaten since birth has been grown on our properties.

Bulls

The bulls were weaned onto a Phalaris based pasture until late May when they were moved onto a multi-species crop of oats, canola and sultan ryegrass with a clover underbase. Hay has been provided for supplementary roughage. A light ration of oats was slowly introduced eight weeks prior to sale. Their final move prior to sale will be to a self-sown paddock of oats and ryegrass.

Heifers

The heifers were weaned onto a summer pasture at Moatefield of predominantly native grasses, kikuyu and Phalaris. They returned to Allawah in late June and were introduced onto a multi-species crop of wheat, purple top turnips and tillage radish. Hay was provided for supplementary roughage. A light ration of oats was introduced to their diet eight weeks prior to sale. They will be moved onto a self sown paddock of oats and ryegrass in the lead up to sale day.

HEALTH AND FERTILITY

All cattle have been tested free of Pestivirus. All bulls and heifers have undergone a full 7 in 1 and Pestivirus vaccination program with the bulls receiving a booster vaccination of 7 in 1 prior to sale. All cattle have also received regular doses of Virbac Multimix, Vitamin AD&E and Vitamin B12. The bulls were drenched with Dectomax Injectable at weaning and backlined with Coopers Pour On prior to sale. The heifers were drenched with Cydectin Long Acting at weaning and backlined with Eprinomax prior to sale.

All bulls have passed a rigorous reproductive examination and crush side semen motility test performed by Geoff & Heather Bush of Independent Breeding Services, Cootamundra.

All heifers were inspected by Dr. Sally Burge, Cootamundra Veterinary Clinic on 18th July 2022 and were certified as having palpably normal internal reproductive organs.

DNA, POLLED AND COAT COLOUR TESTING

All bulls and heifers have been 100K DNA tested and parent verified to provide you with pedigree, polled and coat colour assurance. The results for each sale lot are detailed in the catalogue.

STRUCTURAL ASSESSMENTS & DOCILITY

We're huge on the importance of good structure as a key component of fertility, calving and profitability. As such all sale lots have been inspected and passed an independent accredited structural assessment (feet and legs) by Liam Cardile of BeefXcel (Accreditation No. 1033) on 29th July 2022. These assessments are included in the details for each lot and are a valuable source of additional information.

The bulls and heifers scored ideal scores of 5 for the majority of their feet and leg assessments with a few scores of slight variation of 4 and 6. These assessments qualify them as being 100% acceptable for any breeding program.

All bulls and heifers scored favourable temperament scores of either 1 or 2. We pride ourselves on the temperament of our cattle. No animal has been broken in.

No animal has had their feet trimmed in any way.

SCANNING & SCROTAL

All sale lots were scanned and scrotal measurements taken by Liam Cardile of BeefXcel on 29th July 2022. This data was submitted for the August Breedplan run along with the docility scores.

BRINGING YOUR BULL OR HEIFER HOME

Our bulls and heifers have always been run in mobs and have never been on their own. Since weaning they have been running with their contemporary groups.

When they leave Allawah they will be leaving the security of their mob and will arrive in an environment that is not familiar to them. We recommend that when you bring them home you have some other cattle e.g. pregnant cows or steers in the cattle yards so they have company to settle in with. Provide them with good hay and clean water and give them time to rest and recover and become familiar with their new surrounds. The bulls have never been on a truck so that will also be a new experience for them.

Our cattle have been mustered predominantly by ATV's and have been worked by kelpie dogs. They are knowledgeable and respectful of electric fencing.

Please always be considerate to your bull or heifer and ensure their annual booster vaccinations are kept up date. They will reward you back with years of service and great progeny!





You can count on us.

Wagga Wagga Branch	53 Moorong St	02 6921 1511
Livestock	James Croker	0427 753 533
Livestock	Peter Cabot	0418 601 695
Livestock	Jarrood Slattery	0428 695 700
Livestock	Hamish McGeoch	0467 715 232
Livestock	Ken Miall	0427 135 974
Livestock	Shannon Wicks	0448 646 696
Branch Manager	Peter Dorsett	0427 953 979
Livestock Stud Specialist	Tim Woodham	0436 015 115
Livestock Stud Specialist	Peter Godbolt	0457 591 929
Insurance Manager	Fiona Petersen	0408 924 508

USING YEARLING BULLS

The Opportunities

The use of yearling bulls in progressive breeding programs is well documented with those beef producers reaping the rewards and capitalising on the genetic and financial opportunities. More and more, seedstock producers are offering yearling bulls as their clients and the beef industry at large recognise the advantages. Our bulls are well grown and sexually mature as yearlings and are ready to get out there and work. There is no point in them sitting here bored in our paddocks - they are much better out there working for you!

Here's a brief summary of some of the key benefits:

- ✓ **GENETIC GAIN** The ability to source the latest and best genetics 6 -12 months earlier bringing accelerated genetic gain to your herd.
- ✓ **LONGEVITY** Yearling bulls have an extended working life. Calves are on the ground from yearling bulls when 2 year old bulls have only just been sold. This equates to more calves during the bulls lifetime and hence a lower cost per calf over time. In simple terms - an overall lower cost of production equals more profit per calf.
- ✓ **INBUILT SOUNDNESS** Yearling bulls are keen, young, fit and with high libidos. They adapt quickly to their new environment and get straight to work. They are found to concentrate on getting cows and heifers pregnant, rather than fighting. They are less prone to injury as they haven't been overly prepared.
- ✓ **EASE OF MANAGEMENT** Yearling bulls are easy to handle and manage. Selection for temperament is also important to consider.
- ✓ **THE PARAMETERS** Our yearling Simmental bulls are aged 12-15 months and weigh between 550-700kgs. They have a minimum scrotal circumference of 35cm and are well grown to be able to successfully join both to heifers and cows. Industry research combined with our own visual observation shows that they quickly get the hang of things in the mating department!

YEARLING BULL MANAGEMENT

- When you get them home, ensure you give them a few weeks to settle in. Try to avoid putting them with older bulls, however if you do - please keep a close eye on them.
- Ideally, join yearling bulls alone or with bulls of similar age to avoid potential issues of bullying and injury by older bulls.
- Yearling bulls can handle between 25-40 females for their first joining, however we recommend a joining of no more than 35 females per yearling bull. Join them for 6-8 weeks only and then give them a chance to rest and recover. As with all bulls, keep an eye on their health and condition throughout joining.
- After joining, drench the bulls and place them on good quality feed. Working can impact their appearance, and attention to their diet post joining will overcome this and allow them to recover.

FURTHER INFORMATION

Further information on the benefits of yearling bulls and their management can be found in the following Beef Central and NSW Department of Primary Industry articles:

<https://www.beefcentral.com/genetics/weekly-genetics-review-opportunities-with-yearling-bulls/>

<https://www.dpi.nsw.gov.au/animals-and-livestock/beef-cattle/breeding/bull-selection/yearling-bulls>

<https://www.beefcentral.com/genetics/weekly-genetics-review-selling-yearling-bulls-a-winner/>



SIMMENTAL GROUP BREEDPLAN

Interpreting the Figures

An animal's breeding value is its genetic merit, half of which will be passed onto its progeny. While it is not possible to determine an animal's true breeding value, it is possible to estimate it. These estimates are called **Estimated Breeding Values (EBVs)**. The accuracy of an EBV will increase as more information is collected on that animal and its relatives e.g. progeny.

In the calculation of EBVs, the performance of individual animals within a contemporary group is directly compared to the average of other animals in that group. A contemporary group consists of animals of the same sex and age class within a herd, run under the same management conditions and treated equally. Indirect comparisons are made between animals reared in different contemporary groups, through the use of pedigree links between the groups. The value of EBVs over raw data is that they are the fast track to improving the genetic profile and bottom line performance of any herd. EBVs give a benchmarked breeding predictability (genotype) while raw data is a scale of how the animal presents (phenotype).

It is considered that accuracies of:

Less than 50% - are preliminary EBVs only and could change substantially.

50% - 74% - are EBVs of medium accuracy. Usually based on the animals own pedigree and performance.

75% - 90% - are EBVs of medium to high accuracy. Includes some progeny information. Becoming a more reliable indicator.

Above 90% - are high accuracy estimates of the animals true breeding value.

SIMMENTAL GROUP BREEDPLAN																		
AVERAGE EBV'S FOR 2020 BORN BLACK SIMMENTAL CALVES (ABBREVIATED)																		
AVERAGE	CALV-EASE		BIRTH		GROWTH				FERT	CARCASE					INDEXES			
	DIR	DTRS	GL	BW	200	400	600	MILK	SS	EMA	RIB	RUMP	RBV	IMF	DM	EM	NT	VT
	+4.9	+3.9	-2.5	-1.1	+20	+34	+36	+4	+0.1	+2.6	+1.2	+0.2	-0.5	+0.5	+44	+56	+25	+37

SIMMENTAL GROUP BREEDPLAN																		
AVERAGE EBV'S FOR 2020 BORN TRADITIONAL SIMMENTAL CALVES (ABBREVIATED)																		
AVERAGE	CALV-EASE		BIRTH		GROWTH				FERT	CARCASE					INDEXES			
	DIR	DTRS	GL	BW	200	400	600	MILK	SS	EMA	RIB	RUMP	RBV	IMF	DM	EM	NT	VT
	+2.1	+1.2	-1.2	+0.7	+19	+32	+39	+7	+0.4	+2.4	+0.3	+0.0	+0.5	+0.2	+39	+47	+24	+34

CALVING EASE EBVs

DIR: (%) Calving Ease (DIR) EBVs estimates the genetic differences in the ability of a sires calves to be born unassisted from 2 year old heifers. Higher, more positive EBVs are more favourable.

DTRS: (%) Calving Ease (DTRS) EBVs estimates of genetic differences in the ability of a sires daughters to calve unassisted at 2 years of age. Higher, more positive EBVs are more favourable.

BIRTH EBVs

GL: (Days) Genetic differences between animals in the length of time from the date of conception to the birth of the calf (analysed for AI/ET calves). Lower GL EBVs indicate shorter gestation length.

BWT: (KG) is based on the measured birth weight of progeny and adjusted for dam age. Lower EBVs indicate a lighter calf at birth.

GROWTH/WEIGHT EBVs

200D: (KG) is calculated from the weight of the animals taken between 80 to 300 days of age and is the best estimate of an animals genetic merit for growth to early ages.

400D: (KG) is calculated from the weight of progeny taken between 301 and 500 days of age and is the best estimate of an animals genetic merit for yearling weight.

600D: (KG) is calculated from the weight of progeny taken between 501 and 900 days of age and is the best estimate of an animals genetic merit for growth beyond yearling age.

MILK EBV: (KG) provide an estimate of the maternal contribution of a dam to the 200 day weight of her calf. Larger, more positive, 200 Day Milk EBVs are generally more favourable in herds.

FERTILITY EBV

SCROTAL SIZE (SS): (CM) is an indicator of male fertility in regard to semen quality and quantity. Higher EBV's indicate higher fertility. SS is also positively associated with female fertility.

CARCASE EBVs

EMA: Eye Muscle Area EBV (cm²) estimates genetic differences in EMA in the 12/13th rib site in a standard weight steer carcasse. Larger, more positive EMA EBVs are generally more favourable.

RIB FAT & RUMP FAT EBVs: Rib Fat EBV (mm) estimates the genetic differences in subcutaneous fat depth at the 12/13th rib site and P8 rump site and are adjusted to a standard weight steer carcasse. More positive EBVs may be more favourable.

CARCASE EBVs (CONTINUED)

RBV: Retail Beef Yield (%) represents total (boned out) meat yield as a higher percentage of a carcasse. Sires with larger EBVs are expected to produce progeny with higher yielding carcasses and are generally considered more favourable.

IMF%: Intra-Muscular Fat Percent EBV (%) is an estimate of the genetic difference in the percentage of intramuscular fat at the 12/13th rib site in a standard steer weight carcasse. Larger more positive values are generally more favourable.

INDEXES

Domestic Maternal Index: Estimates the genetic differences between animals in net profitability per cow joined for an example commercial herd in Southern Australia (e.g. Angus cows) targeting the domestic supermarket trade. Steers are either finished on grass or grain (e.g. 60-70 days). Steers are marketed at 430 kg live weight (240 kg HSCW and 6 mm P8 fat depth) at 14 months of age. Daughters are retained for breeding.

Export Maternal Index: Estimates the genetic differences between animals in net profitability per cow joined for an example commercial herd in Southern Australia targeting the export trade. Steers are finished on grain (e.g. 120 days) and marketed at 700 kg live weight (380 kg HSCW and 8 mm P8 fat depth) at 28 months of age. Daughters are retained for breeding.

Northern Terminal Index: Estimates the genetic differences between animals in net profitability per cow joined for an example commercial herd in Northern Australia targeting the export trade. Steers are finished on grass and marketed at 630 kg live weight (345 kg HSCW and 12 mm P8 fat depth) at 28 months of age. This is a terminal production system therefore no daughters are retained for breeding.

Vealer Terminal Index: Estimates the genetic differences between animals in net profitability per cow joined for an example commercial herd in Southern Australia targeting the vealer trade. Vealers are weaned and sold at 8 months of age weighing 350 kg (195 kg HSCW and 6 mm P8 fat depth). This is a terminal production system therefore heifers are not retained for breeding purposes.

BEEF CLASS STRUCTURAL ASSESSMENT SYSTEM

Structural soundness is a key component of our breeding program with all bulls, sale heifers and replacement females independently assessed by Liam Cardile of Beef Xcel in line with the Beef Class Structural Assessment System. Any animal that does not score within the acceptable parameters is culled by us - no questions.

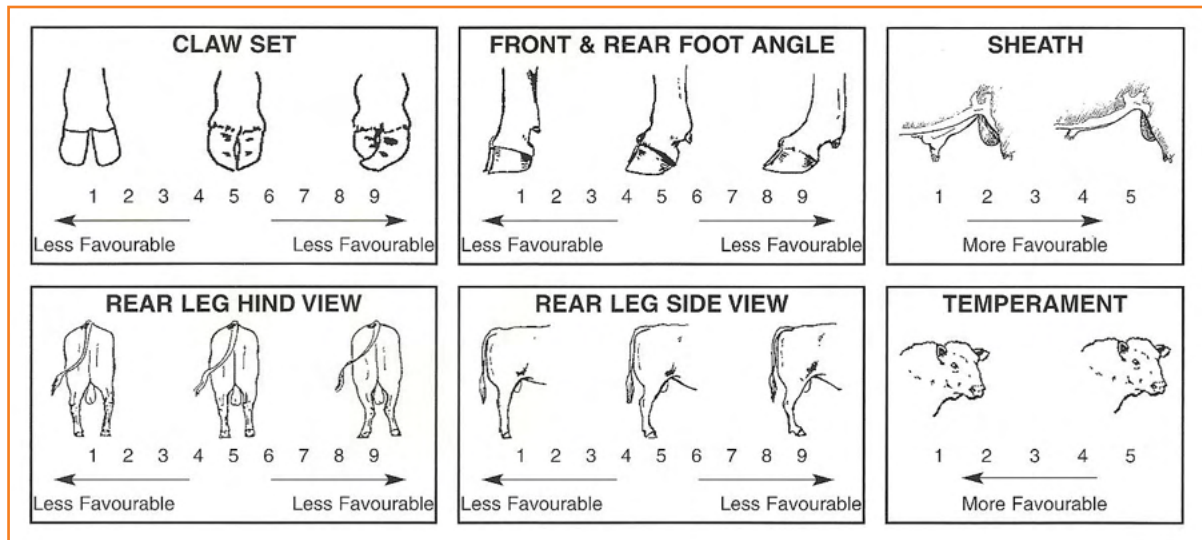
As great cattle structure and producer profitability go hand in hand, it is a primary reference for improving future progeny regardless of whether they are future breeders or destined for the dinner plate. Selecting animals with superior structural soundness is paramount to genetically improving structural traits in a beef breeding enterprise and thus profitability.

Structural problems in sires have detrimental effects on conception rates, calving patterns and thus profitability. Similarly, females with inadequate structural characteristics are more prone to weaning lighter calves or conceiving later in the breeding season than their more functional counterparts. These structural problems are filtered through the supply chain reducing income for the producer or feedlot, thus reducing the overall productivity of the Australian Beef Industry.

The Beef Class Structural Assessment system is a collection of unbiased factual data measuring claw set, front and rear foot angle, and rear leg side and hind view. Sheaths and temperament are also scored by the assessor.

The Beef Class Structural Assessment System uses a 1 to 9 scoring system:

- A score of **5** is ideal. (Note: Temperament Score of 1 is preferable).
- A score of **4 or 6** shows slight variation from ideal, but this includes most animals. An animal scoring 4 or 6 would be acceptable in any breeding program.
- A score of **3 or 7** shows greater variation but would be acceptable in most commercial programs. However, seedstock producers should be vigilant and understand that this score indicates greater variation from ideal.
- A score of **2 or 8** are low scoring animals and should be looked closely at before purchasing.
- A score of **1 (except temperament) or 9** should not be catalogued and are considered culls.

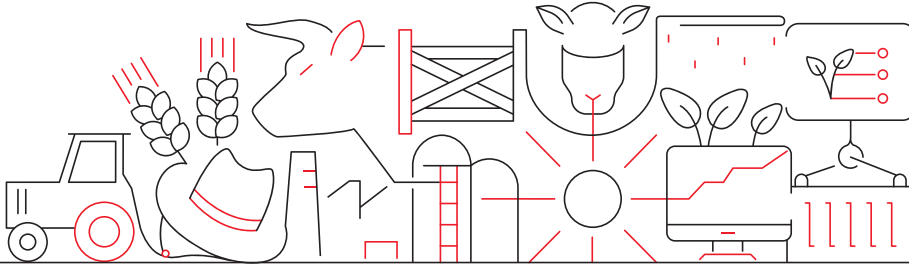


HOMOZYGOUS (HOMO) POLLED - What Does it Mean?

All bulls and heifers have their genetic testing results for their polled status specified in the catalogue. Generally speaking, Black Simmental cattle are genetically homozygous polled, however in Traditional Simmentals this can be different as they historically are a horned breed. We have undertaken intensive selection for the polled gene in our traditional animals without sacrificing quality and performance. BUT - what does Homozygous (Homo) Polled and Heterozygous (Hetero) Polled mean? The table below explains:

BULL	COW OR HEIFER	CALVES FROM THE JOINING
HOMOZYGOUS (HOMO) POLLED: the bull carries two copies of the polled gene		
Homozygous Polled	Homozygous Polled	100% Polled
	Heterozygous Polled (1 copy of the polled gene)	100% Polled
	Horned	100% Polled
HETEROZYGOUS (HETERO) POLLED: the bull is polled, but carries one polled gene and one horned gene		
Heterozygous Polled	Homozygous Polled	100% Polled
	Heterozygous Polled	75% Polled, 25% Horned
	Horned	50% Polled, 50% Horned

more
than
money



DEDICATED TO REGIONAL & AGRIBUSINESS

Wagga Wagga

Your local Agribusiness Team

We know how important it is for you to have someone you can trust on the ground to help support your farming business goals.

We're here and ready to help you build and grow your farming business with our local specialist knowledge and industry experience.

Michelle Heffernan | 0428 644 065

Mick Walker | 0427 610 068

Randall Holmes | 0428 259 507

Bridget Helyar | 0400 016 396

Rodney Ross | 0428 642 144



Let's talk

NAB Agribusiness Wagga

235-241 Baylis Street, Wagga Wagga NSW 2650

1

WORMBETE SULTAN S20 (PP) (AI) (B)

HH

BORN: 17.07.2021 **ID NO:** AGO1S020 **HPS:** Homo Polled **COLOUR:** Homo Black **EYE PIG:** 100/100 **GRADE:** 1/2

- GAR MOMENTUM
- LAWSONS MOMENTOUS M518
- LAWSONS AFRICA H229
SIRE: MURDEDUKE QUARTERBACK Q011
- CARABAH DOCKLANDS D62
- MURDEDUKE BARUNAH N026
- MURDEDUKE K304

- ERIXON PIT BOSS 21Z
- WORMBETE LE-BOSS L28
- ST PAULS GOLDEN PEAR G434
DAM: WORMBETE BLACKBELLE Q48 (PP) (B)
- WORMBETE LENNY KRAVITZ
- WORMBETE BELLE N84
- WORMBETE BELLE L69

F	R	F	R	SCROTAL
6	5	6	6	46
MUSCLE		SHEATH		TEMP
5	5	C+	4	1

EBV	CALV EASE		BIRTH		GROWTH				FERT	CARCASE					INDEXES			
	DIR	DTRS	GL	BW	200	400	600	MILK	SS	EMA	RIB	RUMP	RBY	IMF	DM	EM	NT	VT
-	-	-	-6.5	-5.0	+8	+20	+24	-	+2.0	-0.7	+4.1	+3.8	-3.6	+2.5	+55	+89	+31	+31
Acc			67%	61%	55%	59%	59%		65%	39%	39%	39%	40%	31%				

Traits Observed: GL BWT 200 400 SS FAT EMA IMF DOC

A strong heifer bull option who ticks the boxes for birthweight and carcass data. We used Murdeduke Quarterback Q11 over Black Simmental heifers with great results. A bull to look to to bring the hybrid vigour of Simmental by adding fertility, structure, meat and docility. Top 1% for Birthweight, Gestation Length and IMF%. Top 5% for Rib and Rump. Homozygous Black, Homozygous Polled.

PURCHASER:

PRICE: \$

2

WORMBETE SLATER S8 (PP) (TW) (B)

HH

BORN: 08.07.2021 **ID NO:** AGO1S008 **HPS:** Homo Polled **COLOUR:** Homo Black **EYE PIG:** 100/100 **GRADE:** 1/2

- ESNK31
- RCR AUGUSTUS R54
- RCR NICOLE N32
SIRE: WORMBETE N160 (PP) (ET) (B)
- HC HUMMER 12M
- BONNYDALE GUAVA F218
- BONNYDALE GUAVA

- B/R NEW DESIGN 036
- TE MANIA UNLIMITED U3271
- TE MANIA LOWAN R426
DAM: TRIPLE C ADVANCED IRIS K432
- RENNYLEA DIGGER D288
- ADVANCED IRIS H202
- ST PAULS IRIS NST D10

F	R	F	R	SCROTAL
5	5	5	5	38
MUSCLE		SHEATH		TEMP
4	5	B-	4	1

EBV	CALV EASE		BIRTH		GROWTH				FERT	CARCASE					INDEXES			
	DIR	DTRS	GL	BW	200	400	600	MILK	SS	EMA	RIB	RUMP	RBY	IMF	DM	EM	NT	VT
+8.4	+3.5	-	-5.4	-4.0	+8	+24	+32	+3	+0.7	-1.4	+2.9	+1.9	-2.9	+2.3	+49	+84	+28	+24
Acc	35%	34%	42%	64%	60%	57%	56%	45%	46%	36%	41%	40%	38%	36%				

Traits Observed: BWT 200 400 SS FAT EMA IMF DOC

The Triple C SimAngus females have brought high performance, low input production into the herd and this bull is a great example of that. Out of a super productive dam who produces a great calf each year without fuss. A top calving ease bull with big ticks for fats in top 10% and IMF top 1%. Homozygous Black, Homozygous Polled.

PURCHASER:

PRICE: \$

3

WORMBETE STALLONE S77 (PP) (B)

HH

BORN: 30.07.2021 **ID NO:** AGO2S077 **HPS:** Homo Polled **COLOUR:** Hetero Black **EYE PIG:** 100/100 **GRADE:** 3/4

- ESNK31
- RCR AUGUSTUS R54
- RCR NICOLE N32
SIRE: WORMBETE N160 (PP) (ET) (B)
- HC HUMMER 12M
- BONNYDALE GUAVA F218
- BONNYDALE GUAVA

- BONNYDALE TANKER H200
- TRIPLE C KALIPSO
- TRIPLE C T510 Y46
DAM: WORMBETE IRIS N2 (PP) (B)
- BONNYDALE TANKER H216
- TRIPLE C K456
- ADVANCED IRIS H210

F	R	F	R	SCROTAL
5	5	5	5	41
MUSCLE		SHEATH		TEMP
5	5	B	3	1

EBV	CALV EASE		BIRTH		GROWTH				FERT	CARCASE					INDEXES			
	DIR	DTRS	GL	BW	200	400	600	MILK	SS	EMA	RIB	RUMP	RBY	IMF	DM	EM	NT	VT
+7.6	+7.1	-	-4.2	-1.8	+20	+40	+50	+3	+0.4	+0.8	+0.8	-0.5	-0.9	+1.0	+56	+85	+32	+40
Acc	34%	32%	42%	67%	63%	66%	61%	43%	69%	47%	50%	49%	49%	42%				

Traits Observed: BWT 200 400 SS FAT EMA IMF DOC

A striking, soft, long, deep and beautifully muscled bull with that easy doing personality. Perfect structure and fertility abound with traits for calving ease, growth and IMF added bonuses. Out of a high performing dam who always hits the mark with her progeny. A favourite in the black draft. Heterozygous Black, Homozygous Polled.

PURCHASER:

PRICE: \$

4

WORMBETE SNIPER S42 (PP) (B)

BORN: 22.07.2021 **ID NO:** AGO1S042 **HPS:** Homo Polled **COLOUR:** Homo Black **EYE PIG:** 100/100 **GRADE:** 1/2

- CCR COWBOY CUT 5048Z
- LANCASTER MAGNUM M269
- LANCASTER STRIKE J141

- COONAMBLE Z3
- BONNYDALE SA KANSAS
- BONNYDALE GEORGIA

SIRE: LANCASTER POWERFUL P333 (PP) (ET) (B)
DAM: TRIPLE C K417

- GW LUCKY CHARM 665K
- LANCASTER CHARM
- LANCASTER MISS MATERNAL

- TRIPLE C CHARMER B2
- TRIPLE C F160
- TRIPLE C C37

F	R	F	R	SCROTAL
6	6	6	6	39
MUSCLE		SHEATH		TEMP
5	5	B-	4	2

EBV	CALV EASE		BIRTH		GROWTH				FERT	CARCASE					INDEXES			
	DIR	DTRS	GL	BW	200	400	600	MILK	SS	EMA	RIB	RUMP	RBY	IMF	DM	EM	NT	VT
Acc	+6.5	+0.8	-3.6	-1.8	+18	+37	+46	+3	+0.4	+2.5	+2.0	+1.1	-0.6	+1.0	+55	+81	+35	+43

Traits Observed: BWT 200 400 SS FAT EMA IMF DOC

A bull boasting all the great qualities of his sire, with length, neck extension and capacity. Powerful P333 was purchased from the Lancaster program in 2019 and has brought positives all round. A great young bull with a huge amount to offer the progressive commercial breeding program. Homozygous Black, Homozygous Polled.

PURCHASER:
PRICE: \$

5

WORMBETE SAMURAI S47 (PP) (AI) (B)

BORN: 23.07.2021 **ID NO:** AGOPS047 **HPS:** Homo Polled **COLOUR:** Homo Black **EYE PIG:** 100/100 **GRADE:** Pure

- ELLINGSON LEGACY M229
- MR NLC SUPERIOR S6018
- EBS JOKERS CAREN

- ERIXON PIT BOSS 21Z
- WORMBETE LE-BOSS L28
- ST PAULS GOLDEN PEAR G434

SIRE: TNT TANKER U263 (P) (B)
DAM: WORMBETE GEORGIA P70 (PP) (B)

- TNT FIVE STAR P275
- TNT MISS S17
- TNT MISS HONEY L9

- TRIPLE C BETTIS S72J
- TRIPLE C GEORGIA H205
- BONNYDALE GEORGIA

F	R	F	R	SCROTAL
6	6	5	5	41
MUSCLE		SHEATH		TEMP
5	5	B	4	2

EBV	CALV EASE		BIRTH		GROWTH				FERT	CARCASE					INDEXES			
	DIR	DTRS	GL	BW	200	400	600	MILK	SS	EMA	RIB	RUMP	RBY	IMF	DM	EM	NT	VT
Acc	+2.5	+8.8	-0.9	+0.0	+28	+52	+54	+5	+1.2	+5.7	+1.4	+0.4	+0.4	+0.3	+64	+79	+36	+52

Traits Observed: GL BWT 200 400 SS FAT EMA IMF DOC

A stud package showing that true sire appeal and outlook combined with top of the table figures for Growth, Fertility, Carcase and Indexes. By the proven sire TNT Tanker and out of an extremely impressive young dam from an elite maternal line. Evenly filled from front to back with a strong topline, smooth movement and natural balance. Homozygous Black, Homozygous Polled. Semen retained.

PURCHASER:
PRICE: \$

6

WORMBETE STATESMAN S46 (PP) (B)

BORN: 22.07.2021 **ID NO:** AGO2S046 **HPS:** Homo Polled **COLOUR:** Homo Black **EYE PIG:** 100/100 **GRADE:** 3/4

- CCR COWBOY CUT 5048Z
- LANCASTER MAGNUM M269
- LANCASTER STRIKE J141

- WFL FULLY CHARGED 201M
- WOONALLEE HUMDINGER
- SSP KEEPSAKE 23K

SIRE: LANCASTER POWERFUL P333 (PP) (ET) (B)
DAM: WORMBETE ADVANCED IRIS M146 (P) (B)

- GW LUCKY CHARM 665K
- LANCASTER CHARM
- LANCASTER MISS MATERNAL

- TE MANIA UNLIMITED U3271
- TRIPLE C ADVANCED IRIS K434
- ADVANCED IRIS H202

F	R	F	R	SCROTAL
5	5	5	5	42
MUSCLE		SHEATH		TEMP
5	5	B	4	1

EBV	CALV EASE		BIRTH		GROWTH				FERT	CARCASE					INDEXES			
	DIR	DTRS	GL	BW	200	400	600	MILK	SS	EMA	RIB	RUMP	RBY	IMF	DM	EM	NT	VT
Acc	+5.6	-0.4	-3.1	-1.0	+20	+47	+46	+7	+0.6	+1.6	+2.7	+2.0	-1.6	+1.1	+60	+76	+35	+41

Traits Observed: BWT 200 400 SS FAT EMA IMF DOC

Not purebred, but S46's absolute appeal as an overall genetic package has seen us collect semen for use in our Sim-Angus program. Sensational length, carriage, deep barrel and flank, laid in shoulders and strength of spine are highlights and compliment his perfect structure, temperament and big scrotal. Curve bending birth to growth. Homozygous Black, Homozygous Polled. Semen retained.

PURCHASER:
PRICE: \$

7

WORMBETE SMIRNOFF S26 (PP) (B) HH

BORN: 19.07.2021 **ID NO:** AGO1S026 **HPS:** Homo Polled **COLOUR:** Hetero Black **EYE PIG:** 100/100 **GRADE:** 1/2

- ESNK31
 - RCR AUGUSTUS R54
 - RCR NICOLE N32
- SIRE: WORMBETE N160 (PP) (ET) (B)**
- HC HUMMER 12M
 - BONNYDALE GUAVA F218
 - BONNYDALE GUAVA

- WHEATLAND BULL 131L
 - SAND RANCH HAND
 - SAND LUCKY CHARMER
- DAM: ST PAULS RH PAGENT H224 (P) (ET) (B)**
- BALDRIDGE NEBRASKA 901
 - ST PAULS PAGENT C230
 - ST PAULS LAURA T7

F	R	F	R	SCROTAL
6	6	6	6	41
MUSCLE		SHEATH		TEMP
5	5	B-	4	1

EBV	CALV EASE		BIRTH		GROWTH				FERT	CARCASE					INDEXES			
	DIR	DTRS	GL	BW	200	400	600	MILK	SS	EMA	RIB	RUMP	RBY	IMF	DM	EM	NT	VT
Acc	+8.3	+5.0	-4.7	-3.4	+13	+24	+32	+0	-0.2	+0.2	+0.3	-1.3	-0.7	+1.3	+41	+68	+23	+30
	37%	36%	42%	58%	62%	66%	61%	47%	70%	50%	52%	52%	51%	45%				

Traits Observed: 200 400 SS FAT EMA IMF DOC

A very long, extremely stylish bull with a superb temperament, tight sheath and great outlook. Top 20% for calving ease, gestation and birthweight. Out of a proven St Pauls dam who is always bang on target with her calves. Heterozygous Black, Homozygous Polled.

PURCHASER:

PRICE: \$

8

WORMBETE SELWOOD S41 (PP) (AI) (B) HH

BORN: 21.07.2021 **ID NO:** AGO2S041 **HPS:** Homo Polled **COLOUR:** Homo Black **EYE PIG:** 100/100 **GRADE:** 3/4

- CCR COWBOY CUT 5048Z
 - LANCASTER MAGNUM M269
 - LANCASTER STRIKE J141
- SIRE: LANCASTER POWERFUL P333 (PP) (ET) (B)**
- GW LUCKY CHARM 665K
 - LANCASTER CHARM
 - LANCASTER MISS MATERNAL

- ERIXON PIT BOSS 21Z
 - WORMBETE LE-BOSS L28
 - ST PAULS GOLDEN PEAR G434
- DAM: WORMBETE IRIS Q34 (PP) (B)**
- TRIPLE C KALIPSO
 - WORMBETE IRIS N2
 - TRIPLE C K456

F	R	F	R	SCROTAL
5	5	5	5	43
MUSCLE		SHEATH		TEMP
5	5	B	5	1

EBV	CALV EASE		BIRTH		GROWTH				FERT	CARCASE					INDEXES			
	DIR	DTRS	GL	BW	200	400	600	MILK	SS	EMA	RIB	RUMP	RBY	IMF	DM	EM	NT	VT
Acc	+5.3	+2.2	-2.0	-0.6	+23	+48	+51	+7	+1.9	+2.7	+1.4	+0.5	-0.4	+0.8	+60	+78	+35	+46
	34%	29%	68%	67%	60%	63%	57%	32%	66%	43%	45%	44%	44%	36%				

Traits Observed: GL BWT 200 400 SS FAT EMA IMF DOC

Out of a first calving heifer and with all the wonderful traits of his sire, S41 is a bull that presents with perfect structure and an attractive spread of performance figures. A big butt, wide topline, length and neck extension are just a few of his added bonuses. A very balanced package. Homozygous Black, Homozygous Polled.

PURCHASER:

PRICE: \$

9

WORMBETE SCOTSMAN S69 (PP) (B) HH

BORN: 29.07.2021 **ID NO:** AGOPS069 **HPS:** Homo Polled **COLOUR:** Homo Black **EYE PIG:** 100/100 **GRADE:** Pure

- CCR COWBOY CUT 5048Z
 - LANCASTER MAGNUM M269
 - LANCASTER STRIKE J141
- SIRE: LANCASTER POWERFUL P333 (PP) (ET) (B)**
- GW LUCKY CHARM 665K
 - LANCASTER CHARM
 - LANCASTER MISS MATERNAL

- ELLINGSON LEGACY M229
 - MR NLC SUPERIOR S6018
 - EBS JOKERS CAREN
- DAM: TRIPLE C LIL DESSI H202 (P) (ET) (B)**
- HC HUMMER 12M
 - BONNYDALE LIL DESSI D206
 - ASR LIL DESSI P420

F	R	F	R	SCROTAL
5	6	5	5	40
MUSCLE		SHEATH		TEMP
5	5	B	4	1

EBV	CALV EASE		BIRTH		GROWTH				FERT	CARCASE					INDEXES			
	DIR	DTRS	GL	BW	200	400	600	MILK	SS	EMA	RIB	RUMP	RBY	IMF	DM	EM	NT	VT
Acc	+6.6	+6.9	-3.0	-0.9	+19	+39	+37	+5	+0.9	+2.6	+0.6	-0.5	-0.4	+0.4	+51	+61	+25	+38
	39%	38%	48%	68%	62%	63%	56%	41%	67%	46%	45%	44%	45%	39%				

Traits Observed: BWT 200 400 SS FAT EMA IMF DOC

A cracking young bull with length, softness, structure and shape. A delightful bull to be around in the yards or paddock. Out of a consistent, top producing cow who has gelled extremely well with Powerful. Plenty to like. Homozygous Black, Homozygous Polled.

PURCHASER:

PRICE: \$

10

WORMBETE STRIKE S96 (PP) (B)

HH

BORN: 05.08.2021 ID NO: AGO2S096 HPS: Homo Polled COLOUR: Hetero Black EYE PIG: 100/100 GRADE: 3/4

- CCR COWBOY CUT 5048Z
 - LANCASTER MAGNUM M269
 - LANCASTER STRIKE J141
SIRE: LANCASTER POWERFUL P333 (PP) (ET) (B)
 - GW LUCKY CHARM 665K
 - LANCASTER CHARM
 - LANCASTER MISS MATERNAL

- HARVIE JDF WALLBANGER111
 - ERIXON PIT BOSS 21Z
 - ERIXON LADY 130U
DAM: WORMBETE MISS STRIKE N172 (P) (AI) (B)
 - BONNYDALE SA KANSAS
 - TRIPLE C J070
 - TRIPLE C F169

F	R	F	R	SCROTAL
5	6	5	6	42
MUSCLE		SHEATH		TEMP
5	5	B+	4	1

CALV EASE	BIRTH				GROWTH				FERT	CARCASE					INDEXES			
	DIR	DTRS	GL	BW	200	400	600	MILK	SS	EMA	RIB	RUMP	RBY	IMF	DM	EM	NT	VT
EBV	+7.0	+2.9	-3.0	-1.4	+20	+44	+46	+6	+1.3	+2.2	+1.6	+0.5	-0.8	+1.0	+59	+79	+33	+43
Acc	35%	31%	45%	68%	61%	63%	56%	37%	66%	44%	45%	44%	45%	37%				

Traits Observed: BWT 200 400 SS FAT EMA IMF DOC

Big muscle, big scrotal and big length with terrific hindquarter width and topline. This is a bull that will put plenty of meat into his calves. One of the highest IMF's at scanning and an even spread of figures throughout. Top 15% for all Indexes. Heterozygous Black, Homozygous Polled.

PURCHASER:

PRICE: \$

11

WORMBETE SOLDIER S112 (PP) (B)

HH

BORN: 11.08.2021 ID NO: AGO3S112 HPS: Homo Polled COLOUR: Hetero Black EYE PIG: 100/100 GRADE: 7/8

- CCR COWBOY CUT 5048Z
 - LANCASTER MAGNUM M269
 - LANCASTER STRIKE J141
SIRE: LANCASTER POWERFUL P333 (PP) (ET) (B)
 - GW LUCKY CHARM 665K
 - LANCASTER CHARM
 - LANCASTER MISS MATERNAL

- RCR AUGUSTUS R54
 - WORMBETE N160
 - BONNYDALE GUAVA F218
DAM: WORMBETE BLACKCAP Q95 (PP) (R)
 - TRIPLE C JAXON
 - WORMBETE BLACKCAP M148
 - TRIPLE C J070

F	R	F	R	SCROTAL
5	5	5	5	40
MUSCLE		SHEATH		TEMP
4	5	B-	4	2

CALV EASE	BIRTH				GROWTH				FERT	CARCASE					INDEXES			
	DIR	DTRS	GL	BW	200	400	600	MILK	SS	EMA	RIB	RUMP	RBY	IMF	DM	EM	NT	VT
EBV	+8.0	+3.6	-2.7	-2.1	+18	+45	+44	+3	+0.0	+3.7	+0.3	-1.2	+0.6	+0.6	+60	+75	+32	+45
Acc	34%	30%	42%	66%	61%	63%	57%	33%	66%	44%	45%	45%	45%	37%				

Traits Observed: BWT 200 400 SS FAT EMA IMF DOC

A very neat and even bull with smoothness and balance tracking well on very tidy feet and legs. Another great example of the Powerful type and out of a first calving heifer who is proving her worth as a young stud female. Heterozygous Black, Homozygous Polled.

PURCHASER:

PRICE: \$

12

WORMBETE SUBZERO S83 (PP) (B)

HH

BORN: 01.08.2021 ID NO: AGO1S083 HPS: Homo Polled COLOUR: Homo Black EYE PIG: 100/100 GRADE: 1/2

- ESNK31
 - RCR AUGUSTUS R54
 - RCR NICOLE N32
SIRE: WORMBETE N160 (PP) (ET) (B)
 - HC HUMMER 12M
 - BONNYDALE GUAVA F218
 - BONNYDALE GUAVA

- COONAMBLE Z3
 - BONNYDALE SA KANSAS
 - BONNYDALE GEORGIA
DAM: TRIPLE C K424 (P) (B)
 - TRIPLE C FOCUS C1
 - TRIPLE C F145
 - TRIPLE C D076

F	R	F	R	SCROTAL
6	6	6	6	40
MUSCLE		SHEATH		TEMP
5	5	B-	4	1

CALV EASE	BIRTH				GROWTH				FERT	CARCASE					INDEXES			
	DIR	DTRS	GL	BW	200	400	600	MILK	SS	EMA	RIB	RUMP	RBY	IMF	DM	EM	NT	VT
EBV	+11.4	+6.4	-5.4	-4.8	+9	+21	+25	-1	-0.3	+1.0	+2.0	+1.0	-1.6	+1.6	+51	+78	+27	+33
Acc	36%	35%	44%	66%	63%	66%	60%	46%	69%	48%	49%	49%	42%					

Traits Observed: BWT 200 400 SS FAT EMA IMF DOC

The last of the Wormbete N160 bulls to be offered. S83 is a bull who amply holds his own. Beautifully balanced with smooth shoulders, a great topline and expressive jump muscle. Quiet disposition and great weight for age. Top 5% for calving ease and top 10% for birthweight. Homozygous Black, Homozygous Polled.

PURCHASER:

PRICE: \$

13

WORMBETE SAMUEL S120 (PP) (B)

HH

BORN: 15.08.2021 **ID NO:** AGO1S120 **HPS:** Homo Polled **COLOUR:** Homo Black **EYE PIG:** 100/100 **GRADE:** 1/2

- CCR COWBOY CUT 5048Z
- LANCASTER MAGNUM M269
- LANCASTER STRIKE J141
SIRE: LANCASTER MAGNUM Q202 (PP) (AI) (B)
- LANCASTER HENRY V111 H408
- LANCASTER LIBBY L295
- LANCASTER LIBBY F266

- COONAMBLE Z3
- BONNYDALE SA KANSAS
- BONNYDALE GEORGIA
DAM: TRIPLE C K433 (P) (B)
- TRIPLE C FOCUS C1
- TRIPLE C F135
- TRIPLE C D92

F	R	F	R	SCROTAL
6	6	5	5	41
MUSCLE		SHEATH		TEMP
6	5	B-	4	1

CALV EASE	BIRTH		GROWTH				FERT	CARCASE					INDEXES					
	DIR	DTRS	GL	BW	200	400	600	MILK	SS	EMA	RIB	RUMP	RBY	IMF	DM	EM	NT	VT
EBV	+7.3	+4.0	-4.8	-3.7	+13	+22	+26	+4	+0.9	+2.6	+3.6	+3.0	-1.7	+1.6	+52	+78	+30	+38
Acc	31%	27%	44%	54%	57%	61%	53%	37%	67%	42%	41%	41%	42%	33%				

Traits Observed: BWT 200 400 SS FAT EMA IMF DOC

The first of the Magnum Q202 sons to sell, S120 is a bull who brings evenness and quality to the table though his great temperament and high ranking for Rib and Rump fats. His sire Magnum Q202 was selected as his pedigree shows some of the very best of Lancaster and was in hot demand at their Roses of Lancaster sale in 2020. Homozygous Black, Homozygous Polled.

PURCHASER:

PRICE: \$

14

WORMBETE STANFORD S135 (PP) (B)

HH

BORN: 29.08.2021 **ID NO:** AGO1S135 **HPS:** Homo Polled **COLOUR:** Homo Black **EYE PIG:** 100/100 **GRADE:** 1/2

- CCR COWBOY CUT 5048Z
- LANCASTER MAGNUM M269
- LANCASTER STRIKE J141
SIRE: LANCASTER POWERFUL P333 (PP) (ET) (B)
- GW LUCKY CHARM 665K
- LANCASTER CHARM
- LANCASTER MISS MATERNAL

- COONAMBLE Z3
- BONNYDALE SA KANSAS
- BONNYDALE GEORGIA
DAM: TRIPLE C K427 (P) (B)
- TRIPLE C D016
- TRIPLE C F161
- TRIPLE C A60

F	R	F	R	SCROTAL
6	5	5	5	37
MUSCLE		SHEATH		TEMP
5	5	B-	4	1

CALV EASE	BIRTH		GROWTH				FERT	CARCASE					INDEXES					
	DIR	DTRS	GL	BW	200	400	600	MILK	SS	EMA	RIB	RUMP	RBY	IMF	DM	EM	NT	VT
EBV	+6.2	+0.4	-3.4	-1.8	+16	+37	+44	+3	-0.2	+3.2	+2.6	+1.8	-0.6	+0.8	+57	+79	+36	+42
Acc	34%	32%	41%	56%	58%	61%	54%	37%	66%	43%	41%	40%	42%	33%				

Traits Observed: 200 400 SS FAT EMA IMF DOC

The maternal genetics of these last three bulls are closely related and show the consistency and longevity of their pedigree. A soft, deep barrelled, easy doing bull with a great disposition. A really smart SimAngus bull to suit the needs of the commercial beef market. Homozygous Black, Homozygous Polled.

PURCHASER:

PRICE: \$

15

WORMBETE SIMON S11 (PP) (AI) (B)

HH

BORN: 09.07.2021 **ID NO:** AGO1S011 **HPS:** Homo Polled **COLOUR:** Hetero Black **EYE PIG:** 100/100 **GRADE:** 1/2

- GAR MOMENTUM
- LAWSONS MOMENTOUS M518
- LAWSONS AFRICA H229
SIRE: MURDEDUKE QUARTERBACK Q011
- CARABAH DOCKLANDS D62
- MURDEDUKE BARUNAH N026
- MURDEDUKE K304

- RCR AUGUSTUS R54
- WORMBETE N160
- BONNYDALE GUAYA F218
DAM: WORMBETE GEORGIA Q62 (PP) (B)
- ASR AUGUSTUS Z2165
- TRIPLE C GEORGIA L525
- TRIPLE C GEORGIA H205

F	R	F	R	SCROTAL
6	6	6	6	36
MUSCLE		SHEATH		TEMP
5	5	C+	4	1

CALV EASE	BIRTH		GROWTH				FERT	CARCASE					INDEXES					
	DIR	DTRS	GL	BW	200	400	600	MILK	SS	EMA	RIB	RUMP	RBY	IMF	DM	EM	NT	VT
EBV	+16.1	-	-7.9	-7.8	-4	+1	+2	+1	-1.4	-0.2	+3.6	+2.8	-3.0	+2.0	+42	+69	+21	+20
Acc	26%	-	66%	61%	55%	51%	48%	26%	66%	41%	41%	41%	42%	33%				

Traits Observed: GL BWT 200 400 SS FAT EMA IMF DOC

A true Simmental-Angus bull showing more to the Angus type on a smaller frame. Low birthweight bull and an easily identified heifer bull option with S11 himself out an exceptionally good first calving Black Simmental heifer. A bull to bring that punch of hybrid vigour without losing the type. Heterozygous Black, Homozygous Polled.

PURCHASER:

PRICE: \$

16

WORMBETE SHERLOCK S145 (PP) (B)

HH

BORN: 06.09.2021 ID NO: AGOPS145 HPS: Homo Polled COLOUR: Homo Black EYE FIG: 100/100 GRADE: Pure

- CCR COWBOY CUT 5048Z
 - LANCASTER MAGNUM M269
 - LANCASTER STRIKE J141
SIRE: LANCASTER POWERFUL P333 (PP) (ET) (B)
 - GW LUCKY CHARM 665K
 - LANCASTER CHARM
 - LANCASTER MISS MATERNAL

- DIKEMANS SURE BET
 - WORMBETE LENNY KRAVITZ L138
 - ST PAULS OLIE LUCY E433
DAM: WORMBETE FIFI N52 (P) (B)
 - BULLOCKHILLS GLADIATOR
 - WORMBETE FIFI L103
 - WORMBETE FIFI E108

F	R	F	R	SCROTAL
5	6	6	6	40
				MUSCLE SHEATH TEMP
5	5	B	4	1

CALV EASE	BIRTH		GROWTH				FERT	CARCASE					INDEXES					
	DIR	DTRS	GL	BW	200	400	600	MILK	SS	EMA	RIB	RUMP	RBY	IMF	DM	EM	NT	VT
EBV	-0.7	+1.1	+0.1	+1.0	+25	+46	+57	+8	+1.1	+3.3	+0.4	-0.4	+0.4	+0.5	+47	+62	+31	+39
Acc	35%	31%	50%	67%	59%	56%	52%	35%	40%	31%	35%	34%	33%	30%				

Traits Observed: BWT 200 400 SS FAT EMA IMF DOC

A very complete, eye appealing purebred bull with terrific length and a balanced muscle pattern. Impressive scrotal, a tidy sheath with a kind head and good outlook. Homozygous Black, Homozygous Polled.

PURCHASER:

PRICE: \$

17

WORMBETE STOCKHOLM S137 (PP) (B)

HH

BORN: 30.08.2021 ID NO: AGO2S137 HPS: Homo Polled COLOUR: Homo Black EYE FIG: 100/100 GRADE: 3/4

- CCR COWBOY CUT 5048Z
 - LANCASTER MAGNUM M269
 - LANCASTER STRIKE J141
SIRE: LANCASTER MAGNUM Q202 (PP) (AI) (B)
 - LANCASTER HENRY V111 H408
 - LANCASTER LIBBY L295
 - LANCASTER LIBBY F266

- WHEATLAND ULTIMATE CHOICE
 - WOONALLEE LUMBERJACK
 - CROSSROAD RAMONA 375R
DAM: WORMBETE ADVANCED IRIS Q55 (PP) (B)
 - BONNYDALE TANKER H216
 - TRIPLE C K456
 - ADVANCED IRIS H201

F	R	F	R	SCROTAL
6	6	5	5	39
				MUSCLE SHEATH TEMP
5	5	B	4	1

CALV EASE	BIRTH		GROWTH				FERT	CARCASE					INDEXES					
	DIR	DTRS	GL	BW	200	400	600	MILK	SS	EMA	RIB	RUMP	RBY	IMF	DM	EM	NT	VT
EBV	+3.6	+2.1	-2.7	-0.4	+23	+43	+46	+5	+0.7	+3.0	+1.2	-0.1	-0.3	+0.6	+50	+63	+29	+41
Acc	30%	26%	41%	52%	55%	59%	52%	29%	66%	42%	39%	39%	41%	31%				

Traits Observed: BWT 200 400 SS FAT EMA IMF DOC

Out of a first calving heifer from the proven Advanced Iris female line, S137 displays balance, flexibility, shape and growth. Additional ticks for docility in a very neat package. Homozygous Black, Homozygous Polled.

PURCHASER:

PRICE: \$

18

WORMBETE ST JOHN S101 (PP) (B)

HH

BORN: 07.08.2021 ID NO: AGOPS101 HPS: Homo Polled COLOUR: Homo Black EYE FIG: 100/100 GRADE: Pure

- CCR COWBOY CUT 5048Z
 - LANCASTER MAGNUM M269
 - LANCASTER STRIKE J141
SIRE: LANCASTER POWERFUL P333 (PP) (ET) (B)
 - GW LUCKY CHARM 665K
 - LANCASTER CHARM
 - LANCASTER MISS MATERNAL

- RCR AUGUSTUS R54
 - ASR AUGUSTUS Z2165
 - ASR WR JORDAN W916
DAM: WOONALLEE DEW IT RIGHT L166 (P) (AI) (B)
 - WELSHS REW IT RIGHT 067T
 - WEBB DEW IT RIGHT J640
 - WEBB BRIGADIER G667

F	R	F	R	SCROTAL
5	6	5	5	37
				MUSCLE SHEATH TEMP
5	5	C+	4	1

CALV EASE	BIRTH		GROWTH				FERT	CARCASE					INDEXES					
	DIR	DTRS	GL	BW	200	400	600	MILK	SS	EMA	RIB	RUMP	RBY	IMF	DM	EM	NT	VT
EBV	+7.4	+3.8	-1.5	-1.7	+20	+39	+40	+5	+0.1	+3.7	+0.8	-0.5	+0.3	+0.6	+56	+71	+30	+46
Acc	38%	34%	53%	67%	57%	54%	51%	39%	45%	35%	37%	36%	35%	33%				

Traits Observed: BWT 200 400 SS FAT EMA IMF DOC

S101 wraps up the 2022 black draft on a high note. A bull with a really good genetic background showing style, outlook and a strong topline. Terrific sheath and structure with all the right ingredients. Homozygous Black, Homozygous Polled.

PURCHASER:

PRICE: \$



Lot 18: Wormbete St John S101 (PP) (B)



Lot 6: Wormbete Statesman S46 (PP) (B)



Lot 15: Wormbete Simon S11 (PP) (AI) (B)



Lot 3: Wormbete Stallone S77 (PP) (B)



Lot 13: Wormbete Samuel S120 (PP) (B)



Lot 5: Wormbete Samurai S47 (PP) (AI) (B)



Lot 17: Wormbete Stockholm S137 (PP) (B)



Lot 10: Wormbete Strike S96 (PP) (B)



Lot 37: Wormbete Spartacus S63 (P)



Lot 31: Wormbete Struan S60 (P)



Lot 40: Wormbete Sterling S121 (P)



Lot 36: Wormbete Stewart S56 (P) (AI) (TW)



Lot 41: Wormbete Sebastian S118 (PP)



Lot 33: Wormbete Schooner S67 (PP)



Lot 34: Wormbete Swordsman S81 (PP)



Lot 35: Wormbete Solomon S80 (P)



Lot 20: Wormbete Sovereign S76 (P)



Lot 24: Wormbete Sampson S99 (P)



Lot 22: Wormbete Strongman S64 (P)



Lot 21: Wormbete Scotch Whiskey (PP)



Lot 25: Wormbete Sergeant S37 (P)



Lot 27: Wormbete Shrapnel S29 (PP)



Lot 26: Wormbete Sinclair S110 (P)



Lot 28: Wormbete Slider S45 (PP) (AI)



Lot 39: Wormbete Sheriff S53 (PP) (AI)



Lot 19: Wormbete Sheffield S78 (P)



Lot 42: Wormbete Stockman S36 (PP) (AI)



Lot 30: Wormbete Schofield S119 (P)



Lot 8: Wormbete Selwood S41 (PP) (AI) (B)



Lot 11: Wormbete Soldier S112 (PP) (B)



Lot 7: Wormbete Smirnoff S26 (PP) (B)



Lot 9: Wormbete Scotsman S69 (PP) (B)

19

WORMBETE SHEFFIELD S78 (P)

HH

BORN: 30.07.2021 ID NO: AGOPS078 HPS: Hetero Polled COLOUR: Red

EYE PIG: 100/100 GRADE: Pure

- GLEN ANTHONY Y-ARTA AY02
 - WOONALLEE LAS VEGAS
 - WOONALLEE KATHIE B111
SIRE: WORMBETE PRESIDENT P181 (P) (ET)
 - BULLOCKHILLS GLADIATOR
 - WORMBETE MISHKA K57
 - WORMBETE DIANA

- CORINDADOWNS ACUTE
 - CALLENDALE FRANK
 - CALLENDALE XAONON
DAM: WORMBETE BELLE L82 (P)
 - TRIJENA XING
 - WORMBETE DARA
 - WORMBETE N012

F	R	F	R	SCROTAL
5	5	6	5	39
MUSCLE		SHEATH		TEMP
5	5	B	3	1

CALV EASE	BIRTH		GROWTH				FERT	CARCASE					INDEXES					
	DIR	DTRS	GL	BW	200	400	600	MILK	SS	EMA	RIB	RUMP	RBY	IMF	DM	EM	NT	VT
EBV	-2.8	-0.7	-0.6	+1.7	+16	+22	+31	+8	+0.2	+3.7	+0.3	+0.6	+1.7	-0.6	+25	+21	+18	+28
Acc	36%	34%	37%	59%	61%	65%	59%	43%	68%	47%	51%	50%	49%	43%				

Traits Observed: 200 400 SS FAT EMA IMF DOC

Plenty of eye appeal in this bull with a deep rich red coat and super soft hair. Big body goggles and well hooded eyes. Even throughout with plenty of muscle and capacity. Great structure and temperament.

PURCHASER:

PRICE: \$

20

WORMBETE SOVEREIGN S76 (P)

HH

BORN: 30.07.2021 ID NO: AGOPS076 HPS: Hetero Polled COLOUR: Dark Red

EYE PIG: 100/100 GRADE: Pure

- GLEN ANTHONY Y-ARTA AY02
 - WOONALLEE LAS VEGAS
 - WOONALLEE KATHIE B111
SIRE: WORMBETE PARLIAMENTARIAN P185 (P) (ET)
 - BULLOCKHILLS GLADIATOR
 - WORMBETE MISHKA K57
 - WORMBETE DIANA

- CALLENDALE FRANK
 - WORMBETE KENT K22
 - WORMBETE LIBBY F141
DAM: WORMBETE JENNY N16 (P)
 - WORMBETE DUGALD
 - WORMBETE JENNY H91
 - WORMBETE DOMINICA D20

F	R	F	R	SCROTAL
5	6	5	5	40
MUSCLE		SHEATH		TEMP
5	5	B	4	2

CALV EASE	BIRTH		GROWTH				FERT	CARCASE					INDEXES					
	DIR	DTRS	GL	BW	200	400	600	MILK	SS	EMA	RIB	RUMP	RBY	IMF	DM	EM	NT	VT
EBV	-3.6	-0.1	-0.6	+3.5	+23	+43	+54	+12	+0.8	+0.8	+0.0	+0.3	+0.5	-0.1	+37	+40	+25	+29
Acc	33%	31%	45%	58%	60%	64%	58%	39%	67%	46%	50%	49%	49%	41%				

Traits Observed: 200 400 SS FAT EMA IMF DOC

A dark red, body goggled Parliamentarian son with impressive eye appeal and performance. A strong topline and plenty of width and length on a great set of feet and legs. A very complete package phenotypically, S76 is a sire with some of the most proven Wormbete genetics behind him.

PURCHASER:

PRICE: \$

21

WORMBETE SCOTCH WHISKEY S74 (PP)

HH

BORN: 30.07.2021 ID NO: AGOPS074 HPS: Homo Polled COLOUR: Dark Red

EYE PIG: 100/100 GRADE: Pure

- GLEN ANTHONY Y-ARTA AY02
 - WOONALLEE LAS VEGAS
 - WOONALLEE KATHIE B111
SIRE: WORMBETE PRESIDENT P181 (P) (ET)
 - BULLOCKHILLS GLADIATOR
 - WORMBETE MISHKA K57
 - WORMBETE DIANA

- WORMBETE GEELONG
 - WORMBETE JACKAROO J64
 - WORMBETE JUDY E62
DAM: WORMBETE HENRIETTA M76 (PP)
 - CALLENDALE FRANK
 - WORMBETE HENRIETTA J78
 - WORMBETE X055

F	R	F	R	SCROTAL
5	5	5	5	37
MUSCLE		SHEATH		TEMP
5	5	B	4	1

CALV EASE	BIRTH		GROWTH				FERT	CARCASE					INDEXES					
	DIR	DTRS	GL	BW	200	400	600	MILK	SS	EMA	RIB	RUMP	RBY	IMF	DM	EM	NT	VT
EBV	-0.3	+2.0	-0.5	+2.4	+21	+37	+51	+14	+0.0	+1.8	+0.8	+1.3	+0.6	-0.6	+44	+51	+30	+36
Acc	37%	33%	40%	68%	63%	66%	60%	41%	69%	47%	52%	51%	50%	44%				

Traits Observed: BWT 200 400 SS FAT EMA IMF DOC

A bull that combines the very best with his dam M76 an exceptional high performing female with her sons from our past two sales top draft picks. Perfect structure, perfect temperament with a strong topline and plenty of width and capacity. If you want to lift your female herd to the next level this bull is a definite must see. HOMOZYGOUS POLLED.

PURCHASER:

PRICE: \$

22

WORMBETE STRONGMAN S64 (P)

HH

BORN: 27.07.2021 **ID NO:** AGOPS064 **HPS:** Hetero Polled **COLOUR:** Red

EYE PIG: 100/100 **GRADE:** Pure

- GLEN ANTHONY Y-ARTA AY02
 - WOONALLEE LAS VEGAS
 - WOONALLEE KATHIE B111
SIRE: WORMBETE PRESIDENT P181 (P) (ET)
 - BULLOCKHILLS GLADIATOR
 - WORMBETE MISHKA K57
 - WORMBETE DIANA

- WORMBETE GEELONG
 - WORMBETE DUGALD
 - WORMBETE DAKOTA
DAM: WORMBETE FENA K17 (P)
 - WOONALLEE CLINICAL C71
 - WORMBETE FENA H19
 - WORMBETE B027

F	R	F	R	SCROTAL
6	6	6	6	38
MUSCLE		SHEATH		TEMP
6	5	B	3	1

DIR	CALV EASE		BIRTH		GROWTH				FERT	CARCASE					INDEXES			
	DIR	DTRS	GL	BW	200	400	600	MILK	SS	EMA	RIB	RUMP	RBY	IMF	DM	EM	NT	VT
EBV	-6.8	-1.2	+0.6	+4.2	+23	+41	+59	+10	+0.1	+2.4	-0.6	-0.4	+1.8	-0.6	+28	+29	+24	+27
Acc	37%	35%	42%	67%	64%	66%	60%	43%	69%	47%	52%	51%	50%	43%				

Traits Observed: BWT 200 400 SS FAT EMA IMF DOC

A bigger framed, big barrelled bull with a great skin and hair type and terrific nature. Out of a consistent breeding dam who puts strength and thickness into her calves. A bull to put growth into his progeny.

PURCHASER:
PRICE: \$

23

WORMBETE STAMINA S43 (PP) (AI)

HH

BORN: 22.07.2021 **ID NO:** AGOPS043 **HPS:** Homo Polled **COLOUR:** Red

EYE PIG: 45/100 **GRADE:** Pure

- ANCHOR T RUSTY
 - STARWEST POL BLUEPRINT
 - PHS HOMOZYGOUS XCEPTIONAL
SIRE: SUNNY VALLEY CANON 86E (PP)
 - ANCHOR T VIPER 53W
 - SUNNY VALLEY TRINITY 53Z
 - SUNNY VALLEY TRINITY 70T

- WORMBETE DUGALD
 - WORMBETE GEELONG
 - WORMBETE DAKOTA
DAM: WORMBETE HENRIETTA L88 (P)
 - CALLENDALE FRANK
 - WORMBETE HENRIETTA J78
 - WORMBETE X055

F	R	F	R	SCROTAL
5	5	5	6	37
MUSCLE		SHEATH		TEMP
5	5	B	3	1

DIR	CALV EASE		BIRTH		GROWTH				FERT	CARCASE					INDEXES			
	DIR	DTRS	GL	BW	200	400	600	MILK	SS	EMA	RIB	RUMP	RBY	IMF	DM	EM	NT	VT
EBV	-3.2	-0.2	+0.0	+2.3	+20	+29	+34	+9	-0.6	+3.3	-0.5	-0.8	+1.3	-0.1	+23	+18	+15	+27
Acc	37%	29%	71%	68%	63%	66%	58%	38%	69%	47%	49%	48%	48%	41%				

Traits Observed: GL BWT 200 400 SS FAT EMA IMF DOC

A bull with great temperament, structure and eye appeal excelling in the traits of yield, longevity and stayability. Closely maternally related to Lot 30 and demonstrates the consistency and eliteness of his maternal line. HOMOZYGOUS POLLED.

PURCHASER:
PRICE: \$

24

WORMBETE SAMPSON S99 (P)

HH

BORN: 07.08.2021 **ID NO:** AGOPS099 **HPS:** Hetero Polled **COLOUR:** Dark Red

EYE PIG: 100/100 **GRADE:** Pure

- GLEN ANTHONY Y-ARTA AY02
 - WOONALLEE LAS VEGAS
 - WOONALLEE KATHIE B111
SIRE: WORMBETE PARLIAMENTARIAN P185 (P) (ET)
 - BULLOCKHILLS GLADIATOR
 - WORMBETE MISHKA K57
 - WORMBETE DIANA

- CORINDADOWNS ACUTE
 - CALLENDALE FRANK
 - CALLENDALE XAONON
DAM: WORMBETE BELLE J102 (P)
 - WORMBETE YAKKA
 - WORMBETE BAPTISTA B93
 - WORMBETE V017

F	R	F	R	SCROTAL
5	5	5	5	39
MUSCLE		SHEATH		TEMP
5	5	B	4	1

DIR	CALV EASE		BIRTH		GROWTH				FERT	CARCASE					INDEXES			
	DIR	DTRS	GL	BW	200	400	600	MILK	SS	EMA	RIB	RUMP	RBY	IMF	DM	EM	NT	VT
EBV	+0.6	+0.8	-0.2	+2.2	+19	+31	+46	+13	+0.5	+2.4	+0.3	+0.7	+1.3	-0.7	+39	+45	+28	+36
Acc	36%	35%	41%	67%	63%	66%	60%	45%	68%	47%	51%	51%	50%	43%				

Traits Observed: BWT 200 400 SS FAT EMA IMF DOC

One of the stars of the show and impressive from birth, which is a big plus to have, given the evenness and consistency of this year's draft. Another bull worthy of stud duties with perfect structure, temperament, balance, carriage and moderate frame. Out of a fantastic cow who brings positives across the board.

PURCHASER:
PRICE: \$

25

WORMBETE SERGEANT S37 (P)

HH

BORN: 21.07.2021 ID NO: AGOPS037 HPS: Hetero Polled COLOUR: Red

EYE FIG: 100/100 GRADE: Pure

- GLEN ANTHONY Y-ARTA AY02
 - WOONALLEE LAS VEGAS
 - WOONALLEE KATHIE B111
SIRE: WORMBETE PRESIDENT P181 (P) (ET)
 - BULLOCKHILLS GLADIATOR
 - WORMBETE MISHKA K57
 - WORMBETE DIANA

- CORINDADOWNS ACUTE
 - CALLENDALE FRANK
 - CALLENDALE XAONON
DAM: WORMBETE KATE N75 (P)
 - WOONALLEE CLINICAL C71
 - WORMBETE KATE G6
 - WORMBETE X029

F	R	F	R	SCROTAL
5	5	5	5	39
MUSCLE		SHEATH		TEMP
5	5	B	3	1

CALV EASE	BIRTH		GROWTH				FERT	CARCASE					INDEXES					
	DIR	DTRS	GL	BW	200	400	600	MILK	SS	EMA	RIB	RUMP	RBY	IMF	DM	EM	NT	VT
EBV	-0.8	+1.3	-0.3	+1.8	+18	+22	+35	+10	+0.4	+2.4	+0.0	+0.4	+1.5	-0.6	+29	+31	+21	+32
Acc	37%	34%	40%	66%	63%	65%	59%	41%	69%	47%	50%	50%	49%	42%				

Traits Observed: BWT 200 400 SS FAT EMA IMF DOC

An easy doing, well muscled bull with top marks across the board for structure and temperament. We typically don't keep bulls with white shoulder markings, but the carcass of this fellow was so good we made an exception.

PURCHASER:

PRICE: \$

26

WORMBETE SINCLAIR S110 (P)

HH

BORN: 10.08.2021 ID NO: AGOPS110 HPS: Hetero Polled COLOUR: Red

EYE FIG: 100/100 GRADE: Pure

- SIBELLE DIRTY HARRY 25Z
 - PHS BANK ROLL 345B
 - PHS YUMA
SIRE: WORMBETE PRIME MINISTER P22 (PP) (AI)
 - LRX HP ROCKET 23Y
 - WORMBETE JUDY L17
 - WORMBETE JUDY E62

- DUNMORE HAWKEYE II
 - WORMBETE DARWIN
 - WORMBETE ALEXIS
DAM: WORMBETE NELL H112
 - JOHILL PARK THOR
 - WORMBETE WILMA W75
 - WORMBETE SONIA

F	R	F	R	SCROTAL
5	6	5	6	40
MUSCLE		SHEATH		TEMP
5	5	B	3	2

CALV EASE	BIRTH		GROWTH				FERT	CARCASE					INDEXES					
	DIR	DTRS	GL	BW	200	400	600	MILK	SS	EMA	RIB	RUMP	RBY	IMF	DM	EM	NT	VT
EBV	+4.3	+0.6	-1.1	+1.3	+20	+36	+53	+11	+1.5	+1.9	-1.4	-1.6	+1.4	+0.0	+42	+59	+30	+40
Acc	37%	35%	42%	67%	63%	65%	60%	46%	68%	47%	51%	51%	50%	43%				

Traits Observed: BWT 200 400 SS FAT EMA IMF DOC

The first of the Prime Minister P22 sons to be offered and S110 presents as an impressive young sire. Filled through from front to back with a deep flank that expresses his softness whilst still displaying great length and outlook. A highly valued maternal line backs this bull up.

PURCHASER:

PRICE: \$

27

WORMBETE SHRAPNEL S29 (PP) (AI)

HH

BORN: 20.07.2021 ID NO: AGOPS029 HPS: Homo Polled COLOUR: Red

EYE FIG: 100/100 GRADE: Pure

- ANCHOR T RUSTY
 - STARWEST POL BLUEPRINT
 - PHS HOMOZYGOUS XCEPTIONAL
SIRE: SUNNY VALLEY CANON 86E (PP)
 - ANCHOR T VIPER 53W
 - SUNNY VALLEY TRINITY 53Z
 - SUNNY VALLEY TRINITY 70T

- CORINDADOWNS ACUTE
 - CALLEDNALE FRANK
 - CALLENDALE XAONON
DAM: WORMBETE KIKI J134 (P)
 - REAGENTPARK ESQUIRE
 - WORMBETE ABELE
 - WORMBETE X043

F	R	F	R	SCROTAL
6	5	5	5	39
MUSCLE		SHEATH		TEMP
5	5	B	4	1

CALV EASE	BIRTH		GROWTH				FERT	CARCASE					INDEXES					
	DIR	DTRS	GL	BW	200	400	600	MILK	SS	EMA	RIB	RUMP	RBY	IMF	DM	EM	NT	VT
EBV	+1.9	+2.3	-1.3	+0.7	+18	+21	+28	+9	+0.3	+3.3	+0.1	+0.0	+0.8	+0.2	+30	+35	+19	+34
Acc	38%	29%	71%	68%	62%	65%	57%	39%	69%	46%	46%	45%	46%	38%				

Traits Observed: GL BWT 200 400 SS FAT EMA IMF DOC

An appealing, heavily muscled Canon son with length, thickness and depth. With his big eye patches, fluid movement, tidy sheath and structure, S29 is a bull that can fill any requirement. Boasts a big hindquarter and strength of topline. HOMOZYGOUS POLLED.

PURCHASER:

PRICE: \$

WORMBETE SLIDER S45 (PP) (AI)



BORN: 22.07.2021 **ID NO:** AGOPS045 **HPS:** Homo Polled **COLOUR:** Medium Red **EYE PIG:** 90/0 **GRADE:** Pure

- ANCHOR T RUSTY
 - STARWEST POL BLUEPRINT
 - PHS HOMOZYGOUS XCEPTIONAL
- SIRE: SUNNY VALLEY CANON 86E (PP)**
- ANCHOR T VIPER 53W
 - SUNNY VALLEY TRINITY 53Z
 - SUNNY VALLEY TRINITY 70T

- WORMBETE GEELONG
 - WORMBETE JACKAROO J64
 - WORMBETE JUDY E62
- DAM: WORMBETE LIBBY Q41 (P)**
- GLEN ANTHONY YARTA AY02
 - WORMBETE LIBBY M22
 - WORMBETE LIBBY H50

F	R	F	R	SCROTAL
6	6	5	6	40
MUSCLE		SHEATH		TEMP
5	5	B-	3	1

CALV EASE	BIRTH		GROWTH				FERT	CARCASE					INDEXES					
	DIR	DTRS	GL	BW	200	400	600	MILK	SS	EMA	RIB	RUMP	RBY	IMF	DM	EM	NT	VT
EBV	-2.0	+1.6	+0.5	+2.6	+26	+38	+46	+12	+0.6	+2.2	-0.2	-0.3	+0.5	+0.3	+35	+40	+22	+35
Acc	38%	28%	70%	68%	62%	65%	58%	34%	69%	46%	49%	48%	48%	40%				

Traits Observed: GL BWT 200 400 SS FAT EMA IMF DOC

Out of a first calving heifer, S45 is a great example of the ability of our young females to step right up to the front of the line. A deep, soft, well fleshed bull with a fantastic disposition. The highest IMF of the traditional bulls on scanning day combines with figures for growth, milk and fertility. HOMOZYGOUS POLLED.

PURCHASER:

PRICE: \$

WORMBETE SHOGUN S73 (P)



BORN: 30.07.2021 **ID NO:** AGOPS073 **HPS:** Hetero Polled **COLOUR:** Red **EYE PIG:** 100/100 **GRADE:** Pure

- GLEN ANTHONY Y-ARTA AY02
 - WOONALLEE LAS VEGAS
 - WOONALLEE KATHIE B111
- SIRE: WORMBETE PRESIDENT P181 (P) (ET)**
- BULLOCKHILLS GLADIATOR
 - WORMBETE MISHKA K57
 - WORMBETE DIANA

- CORINDADOWNS ACUTE
 - CALLENDALE FRANK
 - CALLENDALE XAONON
- DAM: WORMBETE HERMOINE J82 (P)**
- TRIJENA XING
 - WORMBETE AVENTIS
 - WORMBETE QUEENIE Q125

F	R	F	R	SCROTAL
6	5	6	5	37
MUSCLE		SHEATH		TEMP
4	5	B	4	1

CALV EASE	BIRTH		GROWTH				FERT	CARCASE					INDEXES					
	DIR	DTRS	GL	BW	200	400	600	MILK	SS	EMA	RIB	RUMP	RBY	IMF	DM	EM	NT	VT
EBV	-8.6	-4.3	+0.5	+3.5	+24	+36	+48	+8	-0.4	+4.9	-0.3	-0.3	+2.8	-0.8	+24	+15	+20	+30
Acc	37%	36%	40%	67%	64%	66%	60%	44%	68%	47%	52%	51%	50%	43%				

Traits Observed: BWT 200 400 SS FAT EMA IMF DOC

The biggest raw EMA at scanning places him in the top 1% and brings carcass and meat to the table. A good boned, growthier bull with length, a wide butt and strong topline. Small button scurs.

PURCHASER:

PRICE: \$

WORMBETE SCHOFIELD S119 (P)



BORN: 15.08.2021 **ID NO:** AGOPS119 **HPS:** Hetero Polled **COLOUR:** Red **EYE PIG:** 100/100 **GRADE:** Pure

- GLEN ANTHONY Y-ARTA AY02
 - WOONALLEE LAS VEGAS
 - WOONALLEE KATHIE B111
- SIRE: WORMBETE PRESIDENT P181 (P) (ET)**
- BULLOCKHILLS GLADIATOR
 - WORMBETE MISHKA K57
 - WORMBETE DIANA

- WORMBETE GEELONG
 - WORMBETE JACKAROO J64
 - WORMBETE JUDY E62
- DAM: WORMBETE NELL M128 (P)**
- WORMBETE GREER
 - WORMBETE NELL J50
 - WORMBETE NELL E57

F	R	F	R	SCROTAL
5	5	5	5	38
MUSCLE		SHEATH		TEMP
5	5	B	3	1

CALV EASE	BIRTH		GROWTH				FERT	CARCASE					INDEXES					
	DIR	DTRS	GL	BW	200	400	600	MILK	SS	EMA	RIB	RUMP	RBY	IMF	DM	EM	NT	VT
EBV	-4.9	-1.0	+0.3	+4.1	+26	+48	+67	+10	+0.5	+2.2	+0.7	+1.3	+0.9	-0.6	+42	+50	+34	+36
Acc	36%	33%	42%	68%	63%	66%	60%	41%	68%	46%	50%	50%	49%	42%				

Traits Observed: BWT 200 400 SS FAT EMA IMF DOC

A balanced, supple bull with a broad muzzle and body goggles. A bull who tracks extremely well and displays plenty of loose skin and soft muscling. Another example of why our commitment to structure and hence longevity is paying off in spades. Scurs.

PURCHASER:

PRICE: \$

31

WORMBETE STRUAN S60 (P)

HH

BORN: 26.07.2021

ID NO: AGOPS060

HPS: Hetero Polled

COLOUR: Red

EYE FIG: 100/100

GRADE: Pure

- GLEN ANTHONY Y-ARTA AY02
 - WOONALLEE LAS VEGAS
 - WOONALLEE KATHIE B111
SIRE: WORMBETE PRESIDENT P181 (P) (ET)
 - BULLOCKHILLS GLADIATOR
 - WORMBETE MISHKA K57
 - WORMBETE DIANA

- WORMBETE GEELONG
 - WORMBETE JACKAROO J64
 - WORMBETE JUDY E62
DAM: WORMBETE NOLA M83 (P)
 - WORMBETE YAKKA
 - WORMBETE E92
 - WORMBETE ARMANI

F	R	F	R	SCROTAL
6	5	6	5	40
MUSCLE		SHEATH		TEMP
5	5	B	3	1

CALV EASE	BIRTH		GROWTH				FERT	CARCASE					INDEXES					
	DIR	DTRS	GL	BW	200	400	600	MILK	SS	EMA	RIB	RUMP	RBY	IMF	DM	EM	NT	VT
EBV	-2.3	+1.1	+0.3	+2.9	+21	+39	+55	+10	+0.9	+3.4	-0.1	+0.3	+1.9	-0.7	+40	+46	+30	+37
Acc	36%	33%	40%	68%	63%	66%	60%	41%	68%	46%	51%	51%	49%	43%				

Traits Observed: BWT 200 400 SS FAT EMA IMF DOC

A bull that is bang on target with sire potential, growth and weight for age. Kind headed with a broad muzzle, smooth skin and soft fine hair. If we were to replace President P181 only to strengthen the polled genes - this bull would be on the list.

PURCHASER:

PRICE: \$

32

WORMBETE SUPERSONIC S54 (PP) (AI)

HH

BORN: 25.07.2021

ID NO: AGOPS054

HPS: Homo Polled

COLOUR: Red

EYE FIG: 100/100

GRADE: Pure

- ANCHOR T RUSTY
 - STARWEST POL BLUEPRINT
 - PHS HOMOZYGOUS XCEPTIONAL
SIRE: SUNNY VALLEY CANON 86E (PP)
 - ANCHOR T VIPER 53W
 - SUNNY VALLEY TRINITY 53Z
 - SUNNY VALLEY TRINITY 70T

- GLEN ANTHONY Y-ARTA AY02
 - WOONALLEE LAS VEGAS
 - WOONALLEE KATHIE B111
DAM: WORMBETE MISHKA P134 (P) (ET) (AI)
 - BULLOCKHILLS GLADIATOR
 - WORMBETE MISHKA K57
 - WORMBETE DIANA

F	R	F	R	SCROTAL
5	5	5	5	42
MUSCLE		SHEATH		TEMP
5	5	B	4	1

CALV EASE	BIRTH		GROWTH				FERT	CARCASE					INDEXES					
	DIR	DTRS	GL	BW	200	400	600	MILK	SS	EMA	RIB	RUMP	RBY	IMF	DM	EM	NT	VT
EBV	-6.5	-0.6	+1.3	+2.7	+25	+37	+49	+10	+1.5	+3.1	+0.5	+0.8	+1.0	-0.1	+29	+28	+23	+31
Acc	37%	29%	70%	68%	62%	64%	57%	34%	69%	46%	46%	45%	46%	37%				

Traits Observed: GL BWT 200 400 SS FAT EMA IMF DOC

There is an enormous amount to like about this moderately framed, impressively balanced bull. His dam is a full ET sister to President and Parliamentarian and you can see why these genetics are so elite. A bull that phenotypically is very hard to fault. Stud sire potential. HOMOZYGOUS POLLED.

PURCHASER:

PRICE: \$

33

WORMBETE SCHOONER S67 (PP)

HH

BORN: 28.07.2021

ID NO: AGOPS067

HPS: Homo Polled

COLOUR: Dark Red

EYE FIG: 100/100

GRADE: Pure

- GLEN ANTHONY Y-ARTA AY02
 - WOONALLEE LAS VEGAS
 - WOONALLEE KATHIE B111
SIRE: WORMBETE PRESIDENT P181 (P) (ET)
 - BULLOCKHILLS GLADIATOR
 - WORMBETE MISHKA K57
 - WORMBETE DIANA

- CORINDADOWNS ACUTE
 - CALLENDALE FRANK
 - CALLENDALE XAONON
DAM: WORMBETE KATE K136 (PP)
 - TRIJENA XING
 - WORMBETE CHARLOTTE
 - WORMBETE X081

F	R	F	R	SCROTAL
5	5	5	6	40
MUSCLE		SHEATH		TEMP
5	5	B	3	1

CALV EASE	BIRTH		GROWTH				FERT	CARCASE					INDEXES					
	DIR	DTRS	GL	BW	200	400	600	MILK	SS	EMA	RIB	RUMP	RBY	IMF	DM	EM	NT	VT
EBV	-1.3	+0.1	-0.6	+1.6	+17	+27	+40	+8	+0.8	+2.7	+0.3	+0.7	+1.3	-0.6	+32	+35	+24	+30
Acc	36%	34%	41%	66%	62%	65%	58%	42%	68%	45%	47%	46%	47%	39%				

Traits Observed: BWT 200 400 SS FAT EMA IMF DOC

A dark red, easy-doing President son with a broad, soft muzzle and dark hooves. A consistent bull with an even spread of figures, good muscle, temperament and structure. HOMOZYGOUS POLLED.

PURCHASER:

PRICE: \$

34

WORMBETE SWORDSMAN S81 (PP)

HH

BORN: 31.07.2021 ID NO: AGOPS081 HPS: Homo Polled COLOUR: Red

EYE PIG: 100/100 GRADE: Pure

- SIBELLE DIRTY HARRY 25Z
- PHS BANK ROLL 345B
- PHS YUMA

- CORINDADOWNS ACUTE
- CALLENDALE FRANK
- CALLENDALE XAONON

SIRE: WORMBETE PRIME MINISTER P22 (PP) (AI)

DAM: WORMBETE BELLE J23 (P)

- LRX HP ROCKET 23Y
- WORMBETE JUDY L17
- WORMBETE JUDY E62

- TRIJENA XING
- WORMBETE DARA
- WORMBETE N012

F	R	F	R	SCROTAL
6	5	5	5	38
MUSCLE		SHEATH		TEMP
4	5	B	4	1

CALV EASE	BIRTH		GROWTH				FERT	CARCASE					INDEXES					
	DIR	DTRS	GL	BW	200	400	600	MILK	SS	EMA	RIB	RUMP	RBY	IMF	DM	EM	NT	VT
EBV	-3.3	-1.7	-0.5	+1.1	+15	+16	+23	+8	-0.1	+3.9	-1.0	-1.3	+1.8	+0.2	+14	+9	+10	+22
Acc	37%	35%	42%	67%	62%	65%	59%	45%	67%	46%	51%	50%	49%	43%				

Traits Observed: BWT 200 400 SS FAT EMA IMF DOC

S81 has plenty of carcass merit with big figures for EMA and one of the highest IMF scans of the group. A well boned, long, tranquil sire with the laid back attitude and muscle typical of his sire. HOMOZYGOUS POLLED.

PURCHASER:

PRICE: \$

35

WORMBETE SOLOMON S80 (P)

HH

BORN: 31.07.2021 ID NO: AGOPS080 HPS: Hetero Polled COLOUR: Dark Red

EYE PIG: 100/70 GRADE: Pure

- GLEN ANTHONY Y-ARTA AY02
- WOONALLEE LAS VEGAS
- WOONALLEE KATHIE B111

- CORINDADOWNS ACUTE
- CALLENDALE FRANK
- CALLENDALE XAONON

SIRE: WORMBETE PRESIDENT P181 (P) (ET)

DAM: WORMBETE JUDY N112 (P)

- BULLOCKHILLS GLADIATOR
- WORMBETE MISHKA K57
- WORMBETE DIANA

- WORMBETE ZIGZAG
- WORMBETE JUDY E62
- WORMBETE Y90

F	R	F	R	SCROTAL
5	5	5	5	42
MUSCLE		SHEATH		TEMP
5	5	B+	3	1

CALV EASE	BIRTH		GROWTH				FERT	CARCASE					INDEXES					
	DIR	DTRS	GL	BW	200	400	600	MILK	SS	EMA	RIB	RUMP	RBY	IMF	DM	EM	NT	VT
EBV	-4.0	+0.3	+0.4	+2.8	+23	+37	+54	+11	+1.6	+4.1	-0.4	-0.2	+2.5	-0.8	+36	+39	+28	+37
Acc	37%	33%	41%	67%	63%	65%	59%	40%	68%	46%	48%	48%	48%	40%				

Traits Observed: BWT 200 400 SS FAT EMA IMF DOC

Some noted female lines are on display here. A soggy, deep barrelled, really laid back bull expressing a strong muscle pattern. His dam is a terrific maternal female with traits for meat, milk and fertility.

PURCHASER:

PRICE: \$

36

WORMBETE STEWART S56 (P) (AI) (TW)

HH

BORN: 25.07.2021 ID NO: AGOPS056 HPS: Hetero Polled COLOUR: Red

EYE PIG: 100/100 GRADE: Pure

- SMITHBILT MOLSON 21M
- CHAMPS ROMANO
- CHAMPS PRICILLA

- BARANA EASTLAKE
- WORMBETE MAJOR M91
- WORMBETE BETH B25

SIRE: CHAMPS BRAVO (P)

DAM: WORMBETE HENRIETTA Q154 (PP)

- DFM MARCUS 14M
- VIRGINIA POLL BARBI SUE
- ANCHOR T BARBI 46K

- WORMBETE JACKAROO
- WORMBETE HENRIETTA M71
- WORMBETE FATIMA

F	R	F	R	SCROTAL
5	6	5	6	39
MUSCLE		SHEATH		TEMP
5	5	B	4	1

CALV EASE	BIRTH		GROWTH				FERT	CARCASE					INDEXES					
	DIR	DTRS	GL	BW	200	400	600	MILK	SS	EMA	RIB	RUMP	RBY	IMF	DM	EM	NT	VT
EBV	+4.1	+0.7	+0.0	+1.9	+23	+38	+41	+10	-0.6	+2.6	-0.4	-0.6	+1.3	-0.3	+45	+48	+26	+45
Acc	45%	44%	51%	58%	60%	61%	58%	49%	63%	48%	51%	50%	49%	45%				

Traits Observed: 200 400 SS FAT EMA IMF DOC

An AI twin to a bull out of a first calving heifer. A bull that has amply held his own displaying a big barrel, deep flank, plenty of softness and good outlook. By the calving ease sire Champs Bravo he shows terrific birth to weaning growth. Small scurs.

PURCHASER:

PRICE: \$

37

WORMBETE SPARTACUS S63 (P)

HH

BORN: 27.07.2021 ID NO: AGOPS063 HPS: Hetero Polled COLOUR: Red

EYE PIG: 100/100 GRADE: Pure

- GLEN ANTHONY Y-ARTA AY02
 - WOONALLEE LAS VEGAS
 - WOONALLEE KATHIE B111
SIRE: WORMBETE PRESIDENT P181 (P) (ET)
 - BULLOCKHILLS GLADIATOR
 - WORMBETE MISHKA K57
 - WORMBETE DIANA

- WORMBETE DUGALD
 - WORMBETE GEELONG
 - WORMBETE DAKOTA
DAM: WORMBETE P48 (PP) (AI)
 - CALLENDALE FRANK
 - WORMBETE KATE M104 (P)
 - WORMBETE KATE E79

F	R	F	R	SCROTAL
5	5	6	5	39
MUSCLE		SHEATH		TEMP
5	5	B	3	1

CALV EASE	BIRTH		GROWTH				FERT	CARCASE					INDEXES					
	DIR	DTRS	GL	BW	200	400	600	MILK	SS	EMA	RIB	RUMP	RBY	IMF	DM	EM	NT	VT
EBV	-8.5	-3.7	+1.3	+3.7	+19	+35	+49	+7	+0.4	+2.4	-0.2	+0.0	+1.7	-0.9	+18	+8	+18	+18
Acc	37%	33%	48%	67%	63%	65%	59%	38%	68%	46%	50%	49%	49%	42%				

Traits Observed: BWT 200 400 SS FAT EMA IMF DOC

A big eye patched, well fleshed son of President P181. Extremely balanced with thickness throughout and fantastic wide soft hams. S63 displays well laid in shoulders a broad muzzle and soft hair type. Plenty of sire eye appeal.

PURCHASER:

PRICE: \$

38

WORMBETE SHIRAZ S31 (PP)

HH

BORN: 20.07.2021 ID NO: AGOPS031 HPS: Homo Polled COLOUR: Dark Red

EYE PIG: 100/100 GRADE: Pure

- SIBELLE DIRTY HARRY 25Z
 - PHS BANK ROLL 345B
 - PHS YUMA
SIRE: WORMBETE PRIME MINISTER P22 (PP) (AI)
 - LRX HP ROCKET 23Y
 - WORMBETE JUDY L17
 - WORMBETE JUDY E62

- WAI-TI HIGH RISER
 - GLEN ANTHONY Y-ARTA AY02
 - WILLOWBROOK URSULINA AU18
DAM: WORMBETE KIRSTY M9 (P) (AI)
 - CALLENDALE FRANK
 - WORMBETE KIRSTY J84
 - WORMBETE ALEXIS

F	R	F	R	SCROTAL
6	6	5	5	38
MUSCLE		SHEATH		TEMP
5	5	B+	4	2

CALV EASE	BIRTH		GROWTH				FERT	CARCASE					INDEXES					
	DIR	DTRS	GL	BW	200	400	600	MILK	SS	EMA	RIB	RUMP	RBY	IMF	DM	EM	NT	VT
EBV	+5.4	+2.4	-1.6	+0.1	+14	+23	+31	+9	-0.4	+3.9	-0.2	-0.2	+1.7	-0.2	+40	+49	+25	+39
Acc	39%	34%	49%	59%	60%	64%	58%	43%	68%	48%	52%	51%	50%	44%				

Traits Observed: 200 400 SS FAT EMA IMF DOC

A huge back end, heaps of length and a strong topline make this bull easy to inspect. Big body goggles and a deep rich red coat. Eye catching from day one. Out of a moderately framed Y-arta cow, he shows plenty of positives for calving ease and muscle. HOMOZYGOUS POLLED.

PURCHASER:

PRICE: \$

39

WORMBETE SHERIFF S53 (P) (AI)

HH

BORN: 25.07.2021 ID NO: AGOPS053 HPS: Hetero Polled COLOUR: Red

EYE PIG: 60/0 GRADE: Pure

- ANCHOR T RUSTY
 - STARWEST POL BLUEPRINT
 - PHS HOMOZYGOUS XCEPTIONAL
SIRE: SUNNY VALLEY CANON 86E (PP)
 - ANCHOR T VIPER 53W
 - SUNNY VALLEY TRINITY 53Z
 - SUNNY VALLEY TRINITY 70T

- WORMBETE GEELONG
 - WORMBETE JACKAROO J64
 - WORMBETE JUDY E62
DAM: WORMBETE BELLE N77 (P)
 - WORMBETE DUGALD
 - WORMBETE BELLE H55
 - WORMBETE DARA

F	R	F	R	SCROTAL
5	5	5	6	39
MUSCLE		SHEATH		TEMP
5	6	B	3	1

CALV EASE	BIRTH		GROWTH				FERT	CARCASE					INDEXES					
	DIR	DTRS	GL	BW	200	400	600	MILK	SS	EMA	RIB	RUMP	RBY	IMF	DM	EM	NT	VT
EBV	-1.9	+1.3	+0.1	+1.7	+20	+33	+34	+9	+0.3	+2.3	-0.7	-0.9	+0.9	+0.2	+30	+26	+16	+28
Acc	37%	29%	71%	68%	63%	65%	57%	36%	69%	46%	46%	46%	46%	38%				

Traits Observed: GL BWT 200 400 SS FAT EMA IMF DOC

Another successful result of the proven combination of Canon and Belle N77. S53 shows off plenty of length and appeal with great neck extension and carriage. Tonnes of longevity in his maternal line with his grand dam still in our herd and his dam a very appealing female. Scurs.

PURCHASER:

PRICE: \$

40

WORMBETE STERLING S121 (P)

HH

BORN: 15.08.2021 ID NO: AGOPS121 HPS: Hetero Polled COLOUR: Red

EYE PIG: 100/100 GRADE: Pure

- SIBELLE DIRTY HARRY 25Z
- PHS BANK ROLL 345B
- PHS YUMA
SIRE: WORMBETE PRIME MINISTER P22 (PP) (AI)
- LRX HP ROCKET 23Y
- WORMBETE JUDY L17
- WORMBETE JUDY E62

- CORINDADOWNS ACUTE
- CALLENDALE FRANK
- CALLENDALE XAONON
DAM: WORMBETE NELL J39 (P)
- WATERFRONT XENOS
- WORMBETE CASSIE
- WORMBETE WILMA W75

F	R	F	R	SCROTAL
5	5	5	5	36
F	R	MUSCLE	SHEATH	TEMP
5	5	B	3	2

CALV EASE	BIRTH		GROWTH				FERT	CARCASE					INDEXES					
	DIR	DTRS	GL	BW	200	400	600	MILK	SS	EMA	RIB	RUMP	RBY	IMF	DM	EM	NT	VT
EBV	-1.9	+0.0	-0.1	+0.2	+8	+6	+9	+8	-0.9	+2.5	-0.1	-0.2	+0.8	+0.3	+8	+0	+5	+12
Acc	37%	34%	46%	67%	62%	65%	59%	44%	68%	47%	50%	50%	49%	42%				

Traits Observed: BWT 200 400 SS FAT EMA IMF DOC

When bulls of this phenotype enter the sale ring at this position in the catalogue it reinforces the strength of the draft. S121 is moderate in frame but gives nothing away in quality and appeal. His dam produced the top priced bull at our 2021 September sale and this bull is similar in type and equally hard to fault visually. Very correct and packed with style, softness and width.

PURCHASER:

PRICE: \$

41

WORMBETE SEBASTIAN S118 (PP)

HH

BORN: 14.08.2021 ID NO: AGOPS118 HPS: Homo Polled COLOUR: Red

EYE PIG: 100/100 GRADE: Pure

- SIBELLE DIRTY HARRY 25Z
- PHS BANK ROLL 345B
- PHS YUMA
SIRE: WORMBETE PRIME MINISTER P22 (PP) (AI)
- LRX HP ROCKET 23Y
- WORMBETE JUDY L17
- WORMBETE JUDY E62

- GLEN ANTHONY Y-ARTA AY02
- WOONALLEE LAS VEGAS
- WOONALLEE KATHIE B111
DAM: WORMBETE MISHKA P132 (P) (ET) (AI)
- BULLOCKHILLS GLADIATOR
- WORMBETE MISHKA K57
- WORMBETE DIANA

F	R	F	R	SCROTAL
5	5	5	5	38
F	R	MUSCLE	SHEATH	TEMP
5	5	B	3	2

CALV EASE	BIRTH		GROWTH				FERT	CARCASE					INDEXES					
	DIR	DTRS	GL	BW	200	400	600	MILK	SS	EMA	RIB	RUMP	RBY	IMF	DM	EM	NT	VT
EBV	+2.3	+3.3	-1.3	+0.2	+15	+23	+36	+11	+0.6	+3.1	+0.4	+0.8	+1.3	-0.4	+39	+48	+26	+36
Acc	37%	32%	44%	66%	61%	64%	58%	39%	67%	45%	48%	48%	47%	40%				

Traits Observed: BWT 200 400 SS FAT EMA IMF DOC

Moderate in frame and out of a classy ET sister to President and Parliamentarian. Stylish, correct and well pigmented, he oozes eye appeal. Very balanced with a volume of loose skin, fleshing ability and thickness that the astute cattleperson will not overlook. HOMOZYGOUS POLLED.

PURCHASER:

PRICE: \$

42

WORMBETE STOCKMAN S36 (PP) (AI)

HH

BORN: 21.07.2021 ID NO: AGOPS036 HPS: Homo Polled COLOUR: Red

EYE PIG: 100/100 GRADE: Pure

- WORMBETE GEELONG
- WORMBETE JACKAROO J64
- WORMBETE JUDY E62
SIRE: WORMBETE MILLENIUM M91 (PP)
- TRIJENA XING
- WORMBETE BRIDGET B119
- WORMBETE R098

- RPF POL RIGHT DIRECTION
- TUGULAWA LANCE
- RPF DOLLY
DAM: WORMBETE MISHKA Q69 (PP)
- BULLOCKHILLS GLADIATOR
- WORMBETE MISHKA K57
- WORMBETE DIANA

F	R	F	R	SCROTAL
5	6	5	6	41
F	R	MUSCLE	SHEATH	TEMP
5	5	B	4	2

CALV EASE	BIRTH		GROWTH				FERT	CARCASE					INDEXES					
	DIR	DTRS	GL	BW	200	400	600	MILK	SS	EMA	RIB	RUMP	RBY	IMF	DM	EM	NT	VT
EBV	+0.1	-1.9	-0.9	+0.8	+15	+28	+38	+9	+1.9	+2.9	+0.2	+0.9	+1.0	-0.1	+35	+39	+25	+31
Acc	36%	31%	68%	67%	63%	65%	61%	37%	69%	47%	50%	49%	49%	41%				

Traits Observed: GL BWT 200 400 SS FAT EMA IMF DOC

A well fleshed, moderately framed, balanced bull out of a first calving heifer from the top Mishka line. A bull that tracks extremely well with a good hair type and neat sheath. His sire Millenium has been extremely successful as an AI sire over heifers. HOMOZYGOUS POLLED.

PURCHASER:

PRICE: \$

43

WORMBETE SALUTE S95 (PP) (AI)

HH

BORN: 04.08.2021

ID NO: AGOPS095

HPS: Homo Polled

COLOUR: Red

EYE PIG: 60/0

GRADE: Pure

- ANCHOR T RUSTY
- STARWEST POL BLUEPRINT
- PHS HOMOZYGOUS XCEPTIONAL

- WORMBETE GEELONG
- WORMBETE JACKAROO J64
- WORMBETE JUDY E62

SIRE: SUNNY VALLEY CANON 86E (PP)

DAM: WORMBETE NOLA M120 (P)

- ANCHOR T VIPER 53W
- SUNNY VALLEY TRINITY 53Z
- SUNNY VALLEY TRINITY 70T

- WORMBETE ATOMIC
- WORMBETE NOLA E74
- WORMBETE Z114

F	R	F	R	SCROTAL
5	5	5	6	38
MUSCLE		SHEATH		TEMP
5	5	B	4	2

EBV	CALV EASE		BIRTH		GROWTH				FERT	CARCASE					INDEXES			
	DIR	DTRS	GL	BW	200	400	600	MILK	SS	EMA	RIB	RUMP	RBY	IMF	DM	EM	NT	VT
Acc	-2.4	-1.9	+3.2	+1.6	+18	+23	+31	+10	-0.3	+2.1	-0.4	-0.7	+0.6	-0.1	+18	+13	+13	+22

Traits Observed: GL BWT 200 400 SS FAT EMA IMF DOC

A good looking Canon son with width in behind and a soft coat. More top marks for structure and a good sheath. Sound growth and plenty of fertility and milk which go hand in hand with his maternal line. HOMOZYGOUS POLLED.

PURCHASER:

PRICE: \$

44

WORMBETE STANLEY S103 (PP)

HH

BORN: 08.08.2021

ID NO: AGOPS103

HPS: Homo Polled

COLOUR: Red

EYE PIG: 100/100

GRADE: Pure

- SIBELLE DIRTY HARRY 25Z
- PHS BANK ROLL 345B
- PHS YUMA

- CALLENDALE FRANK
- WORMBETE JIM BEAM J61
- WORMBETE FATIMA

SIRE: WORMBETE PRIME MINISTER P22 (PP) (AI)

DAM: WORMBETE JENNY L81 (PP)

- LRX HP ROCKET 23Y
- WORMBETE JUDY L17
- WORMBETE JUDY E62

- TRIJENA XING
- WORMBETE BRIDGET B119
- WORMBETE R098

F	R	F	R	SCROTAL
5	5	6	6	38
MUSCLE		SHEATH		TEMP
5	5	B-	3	1

EBV	CALV EASE		BIRTH		GROWTH				FERT	CARCASE					INDEXES			
	DIR	DTRS	GL	BW	200	400	600	MILK	SS	EMA	RIB	RUMP	RBY	IMF	DM	EM	NT	VT
Acc	-5.1	-4.3	+0.3	+1.8	+15	+15	+26	+4	+0.3	+2.8	-0.8	-1.0	+1.6	-0.3	+4	-5	+8	+16

Traits Observed: BWT 200 400 SS FAT EMA IMF DOC

A moderately framed bull by the muscleman sire, Prime Minister P22. Saturated with homozygous polled genetics on both sides, he presents with great structure and temperament. HOMOZYGOUS POLLED.

PURCHASER:

PRICE: \$

45

WORMBETE SMIGGLE S70 (P) (AI)

HH

BORN: 29.07.2021

ID NO: AGOPS070

HPS: Hetero Polled

COLOUR: Red

EYE PIG: 100/100

GRADE: Pure

- ANCHOR T RUSTY
- STARWEST POL BLUEPRINT
- PHS HOMOZYGOUS XCEPTIONAL

- BULLOCKHILLS GLADIATOR
- WORMBETE LEONARDO L108
- WORMBETE DEMI

SIRE: SUNNY VALLEY CANON 86E (PP)

DAM: WORMBETE BELLE Q035 (P)

- ANCHOR T VIPER 53W
- SUNNY VALLEY TRINITY 53Z
- SUNNY VALLEY TRINITY 70T

- WORMBETE JACKAROO J64
- WORMBETE BELLE N99
- WORMBETE BELLE J102

F	R	F	R	SCROTAL
5	6	5	6	38
MUSCLE		SHEATH		TEMP
5	5	B	4	1

EBV	CALV EASE		BIRTH		GROWTH				FERT	CARCASE					INDEXES			
	DIR	DTRS	GL	BW	200	400	600	MILK	SS	EMA	RIB	RUMP	RBY	IMF	DM	EM	NT	VT
Acc	-2.5	+0.4	+1.9	+1.2	+17	+22	+28	+10	+0.6	+3.7	-0.2	-0.2	+1.3	+0.2	+23	+21	+15	+27

Traits Observed: GL BWT 200 400 SS FAT EMA IMF DOC

A heavily muscled, free moving AI son of Canon out of a feminine first calving heifer. Top marks for docility and a tight sheath. Strong for EMA and Retail Beef Yield and showed an above average IMF for the group at scanning. Button scurs.

PURCHASER:

PRICE: \$

46

WORMBETE SPARTAN S141 (P)

HH

BORN: 02.09.2021 ID NO: AGOPS141 HPS: Hetero Polled COLOUR: Red

EYE FIG: 100/100 GRADE: Pure

- GLEN ANTHONY Y-ARTA AY02
 - WOONALLEE LAS VEGAS
 - WOONALLEE KATHIE B111
SIRE: WORMBETE PARLIAMENTARIAN P185 (P) (ET)
 - BULLOCKHILLS GLADIATOR
 - WORMBETE MISHKA K57
 - WORMBETE DIANA

- CORINDADOWNS ACUTE
 - CALLENDALE FRANK
 - CALLENDALE XAONON
DAM: WORMBETE FIFI L140 (P) (ET)
 - WORMBETE YATES
 - WORMBETE FIFI B112
 - WORMBETE FIFI V14

F	R	F	R	SCROTAL
5	6	5	6	36
MUSCLE		SHEATH		TEMP
5	5	B-	3	1

CALV EASE	BIRTH		GROWTH				FERT	CARCASE					INDEXES					
	DIR	DTRS	GL	BW	200	400	600	MILK	SS	EMA	RIB	RUMP	RBY	IMF	DM	EM	NT	VT
EBV	-2.1	+0.0	-0.1	+2.7	+22	+34	+47	+13	-0.2	+2.1	+0.6	+1.0	+0.8	-0.3	+37	+42	+26	+34
Acc	35%	33%	40%	67%	62%	64%	58%	42%	67%	45%	47%	46%	46%	39%				

Traits Observed: BWT 200 400 SS FAT EMA IMF DOC

A young bull who shows all the makings of the punch and power of his sire Parliamentarian. A bull to put dimension and growth into his calves and brings a positive spread of figures for temperament, milk and carcass.

PURCHASER:

PRICE: \$

47

WORMBETE SHELDON S24 (P) (AI) (TW)

HH

BORN: 19.07.2021 ID NO: AGOPS024 HPS: Hetero Polled COLOUR: Red

EYE FIG: 100/100 GRADE: Pure

- ANCHOR T RUSTY
 - STARWEST POL BLUEPRINT
 - PHS HOMOZYGOUS XCEPTIONAL
SIRE: SUNNY VALLEY CANON 86E (PP)
 - ANCHOR T VIPER 53W
 - SUNNY VALLEY TRINITY 53Z
 - SUNNY VALLEY TRINITY 70T

- WORMBETE GEELONG
 - WORMBETE JACKAROO J64
 - WORMBETE JUDY E62
DAM: WORMBETE JENNY M40 (P)
 - WORMBETE ATOMIC
 - WORMBETE DOMINICA D20
 - WORMBETE BRIDGET B119

F	R	F	R	SCROTAL
5	6	5	6	40
MUSCLE		SHEATH		TEMP
5	5	B-	4	2

CALV EASE	BIRTH		GROWTH				FERT	CARCASE					INDEXES					
	DIR	DTRS	GL	BW	200	400	600	MILK	SS	EMA	RIB	RUMP	RBY	IMF	DM	EM	NT	VT
EBV	+1.1	+1.3	-0.4	+0.6	+18	+27	+32	+10	+1.0	+3.3	-0.2	-0.3	+0.9	+0.4	+34	+39	+20	+34
Acc	36%	29%	51%	67%	62%	63%	57%	37%	62%	43%	47%	46%	45%	39%				

Traits Observed: BWT 200 400 SS FAT EMA IMF DOC

An AI twin to a bull who was raised alongside his brother with no sacrifice of growth. A bigger framed bull, S24 displays plenty of length and depth. His dam M40 is a very tidy Jackaroo cow who puts plenty of fertility, milk and effort into her calves.

PURCHASER:

PRICE: \$

48

WORMBETE SIMPSON S75 (P)

HH

BORN: 30.07.2021 ID NO: AGOPS075 HPS: Hetero Polled COLOUR: Red

EYE FIG: 100/100 GRADE: Pure

- SIBELLE DIRTY HARRY 25Z
 - PHS BANK ROLL 345B
 - PHS YUMA
SIRE: WORMBETE PRIME MINISTER P22 (PP) (AI)
 - LRX HP ROCKET 23Y
 - WORMBETE JUDY L17
 - WORMBETE JUDY E62

- CORINDADOWNS DELIVER
 - WOONALLEE GOSPLE
 - WOONALLEE ROWENA E140
DAM: WORMBETE KIRSTY K37 (P)
 - WORMBETE DUGALD
 - WORMBETE KIRSTY H132
 - WORMBETE ALEXIS

F	R	F	R	SCROTAL
5	6	5	5	37
MUSCLE		SHEATH		TEMP
5	5	B-	4	2

CALV EASE	BIRTH		GROWTH				FERT	CARCASE					INDEXES					
	DIR	DTRS	GL	BW	200	400	600	MILK	SS	EMA	RIB	RUMP	RBY	IMF	DM	EM	NT	VT
EBV	-5.8	-3.3	+0.7	+1.7	+14	+14	+24	+8	-0.4	+3.0	-0.9	-1.3	+1.7	-0.1	+3	-7	+6	+14
Acc	34%	31%	39%	66%	61%	64%	58%	41%	67%	45%	49%	48%	48%	40%				

Traits Observed: BWT 200 400 SS FAT EMA IMF DOC

A bit of a different mix of genetics. Sound structure and a tight sheath with big eye patches. Excellent figures for EMA and Retail Beef Yield in the top 5%.

PURCHASER:

PRICE: \$

49

WORMBETE MILLIE S51 (P)

HH

BORN: 24.07.2021 ID NO: AGOPS051 HPS: Hetero Polled COLOUR: Red

EYE FIG: 100/100 GRADE: Pure

- SIBELLE DIRTY HARRY 25Z
 - PHS BANK ROLL 345B
 - PHS YUMA
SIRE: WORMBETE PRIME MINISTER P22 (PP) (AI)
 - LRX HP ROCKET 23Y
 - WORMBETE JUDY L17
 - WORMBETE JUDY E62

- CALLENDALE FRANK
 - WORMBETE KIDMAN K94
 - WORMBETE NOLA C105
DAM: WORMBETE N130 (S)
 - WOONALLEE CLINCIAL C71
 - WORMBETE MILLIE F113
 - WORMBETE MILLIE C31

F	R	F	R	SCROTAL
5	5	5	6	
				MUSCLE SHEATH TEMP
5	5			2

CALV EASE	BIRTH		GROWTH				FERT	CARCASE					INDEXES					
	DIR	DTRS	GL	BW	200	400	600	MILK	SS	EMA	RIB	RUMP	RBY	IMF	DM	EM	NT	VT
EBV	-6.6	-4.3	+0.7	+2.8	+22	+34	+46	+10	+0.3	+1.9	-0.6	-0.8	+0.8	+0.3	+19	+18	+16	+21
Acc	34%	29%	42%	67%	60%	64%	58%	38%	45%	40%	57%	56%	51%	48%				

Traits Observed: BWT 400 SS FAT EMA IMF DOC

A very roomy heifer with plenty of shape, big body goggles and length from hip to pin. Out of a capacity female who has gelled nicely with Prime Minister.

PURCHASER:

PRICE: \$

50

WORMBETE BELLE S140 (P)

HH

BORN: 02.09.2021 ID NO: AGOPS140 HPS: Hetero Polled COLOUR: Red

EYE FIG: 100/100 GRADE: Pure

- GLEN ANTHONY Y-ARTA AY02
 - WOONALLEE LAS VEGAS
 - WOONALLEE KATHIE B111
SIRE: WORMBETE PARLIAMENTARIAN P185 (P) (ET)
 - BULLOCKHILLS GLADIATOR
 - WORMBETE MISHKA K57
 - WORMBETE DIANA

- CORINDADOWNS ACUTE
 - CALLENDALE FRANK
 - CALLENDALE XAONON
DAM: WORMBETE BELLE L46 (P)
 - WORMBETE YAKKA
 - WORMBETE BAPTISTA B93
 - WORMBETE V017

F	R	F	R	SCROTAL
5	6	5	5	
				MUSCLE SHEATH TEMP
5	5			2

CALV EASE	BIRTH		GROWTH				FERT	CARCASE					INDEXES					
	DIR	DTRS	GL	BW	200	400	600	MILK	SS	EMA	RIB	RUMP	RBY	IMF	DM	EM	NT	VT
EBV	-1.8	-1.7	-0.1	+2.7	+21	+32	+47	+12	+0.6	+2.8	+0.5	+1.0	+1.2	-0.4	+35	+40	+27	+35
Acc	35%	34%	43%	67%	61%	65%	59%	42%	46%	41%	58%	57%	52%	49%				

Traits Observed: BWT 400 SS FAT EMA IMF DOC

A feminine heifer out of a well valued dam. Closely related to Lot 24 with their dams being full sisters, both sired by Parliamentarian and showing the same style and balance. With plenty of length and smooth shoulders, this wedge shaped heifer has a lovely outlook.

PURCHASER:

PRICE: \$

51

WORMBETE FIFI S128 (P)

HH

BORN: 22.08.2021 ID NO: AGOPS128 HPS: Hetero Polled COLOUR: Red

EYE FIG: 100/100 GRADE: Pure

- GLEN ANTHONY Y-ARTA AY02
 - WOONALLEE LAS VEGAS
 - WOONALLEE KATHIE B111
SIRE: WORMBETE PRESIDENT P181 (P) (ET)
 - BULLOCKHILLS GLADIATOR
 - WORMBETE MISHKA K57
 - WORMBETE DIANA

- WORMBETE DUGALD
 - WORMBETE GEELONG
 - WORMBETE DAKOTA
DAM: WORMBETE FIFI J55 (P)
 - WOONALLEE CLINCIAL C71
 - WORMBETE FIFI G032
 - WORMBETE Y107

F	R	F	R	SCROTAL
5	5	5	5	
				MUSCLE SHEATH TEMP
5	5			2

CALV EASE	BIRTH		GROWTH				FERT	CARCASE					INDEXES					
	DIR	DTRS	GL	BW	200	400	600	MILK	SS	EMA	RIB	RUMP	RBY	IMF	DM	EM	NT	VT
EBV	-2.9	-1.6	+0.0	+1.9	+16	+29	+39	+9	+0.3	+2.7	+0.4	+1.0	+1.3	-0.5	+30	+28	+23	+27
Acc	38%	36%	39%	59%	60%	66%	59%	42%	49%	43%	60%	59%	54%	50%				

Traits Observed: BWT 400 SS FAT EMA IMF DOC

A longer headed heifer with good neck extension leading through to smooth shoulders and into a long, softly fleshed body. Terrific structure and loads of longevity in her pedigree.

PURCHASER:

PRICE: \$

52

WORMBETE LIBBY S132 (P)

HH

BORN: 27.08.2021 ID NO: AGOPS132 HPS: Hetero Polled COLOUR: Red

EYE PIG: 100/95 GRADE: Pure

- GLEN ANTHONY Y-ARTA AY02
 - WOONALLEE LAS VEGAS
 - WOONALLEE KATHIE B111
SIRE: WORMBETE PRESIDENT P181 (P) (ET)
 - BULLOCKHILLS GLADIATOR
 - WORMBETE MISHKA K57
 - WORMBETE DIANA

- WOONALLEE GLADIATOR
 - WOONALLEE CLINICAL C71
 - WOONALLEE JULANI A38
DAM: WORMBETE LIBBY F141
 - REAGENTPARK ESQUIRE
 - WORMBETE LIBBY A112
 - WORMBETE LIBBY X60

F	R	F	R	SCROTAL
5	5	5	5	
				MUSCLE
5	5			SHEATH
				TEMP
				2

CALV EASE	BIRTH		GROWTH				FERT	CARCASE					INDEXES					
	DIR	DTRS	GL	BW	200	400	600	MILK	SS	EMA	RIB	RUMP	RBY	IMF	DM	EM	NT	VT
EBV	-2.4	+0.8	-0.2	+3.4	+26	+42	+59	+14	+1.0	+2.5	+0.1	+0.6	+1.5	+0.7	+43	+50	+32	+41
Acc	37%	35%	40%	58%	59%	64%	57%	43%	51%	43%	58%	57%	52%	48%				

Traits Observed: 400 SS FAT EMA IMF DOC

A maternal sister to our record bull, Wormbete Kent K22, with her dam still in the herd at 12 years of age and producing great calves. A soft, deep, yet well fleshed heifer with abundant femininity, style and outlook.

PURCHASER:

PRICE: \$

53

WORMBETE FRED A S113 (PP)

HH

BORN: 12.08.2021 ID NO: AGOPS113 HPS: Homo Polled COLOUR: Red

EYE PIG: 100/100 GRADE: Pure

- SIBELLE DIRTY HARRY 25Z
 - PHS BANK ROLL 345B
 - PHS YUMA
SIRE: WORMBETE PRIME MINISTER P22 (PP) (AI)
 - LRX HP ROCKET 23Y
 - WORMBETE JUDY L17
 - WORMBETE JUDY E62

- CORINDADOWNS ACUTE
 - CALLENDALE FRANK
 - CALLENDALE XAONON
DAM: WORMBETE FRED A J86 (PP)
 - VINTAGE CENTAUR
 - WORMBETE D078
 - WORMBETE BETTE

F	R	F	R	SCROTAL
5	6	5	6	
				MUSCLE
5	6			SHEATH
				TEMP
				2

CALV EASE	BIRTH		GROWTH				FERT	CARCASE					INDEXES					
	DIR	DTRS	GL	BW	200	400	600	MILK	SS	EMA	RIB	RUMP	RBY	IMF	DM	EM	NT	VT
EBV	-3.6	-3.1	+0.0	+1.2	+15	+20	+29	+8	+0.4	+3.0	+0.2	+0.2	+0.7	+0.2	+17	+15	+14	+20
Acc	37%	33%	41%	57%	59%	64%	58%	43%	47%	42%	59%	58%	52%	49%				

Traits Observed: 400 SS FAT EMA IMF DOC

A heifer who is saturated with polled genetics and showcases balance, style and femininity. Long bodied and well marked with a positive set of figures for carcass data across the board. HOMOZYGOUS POLLED.

PURCHASER:

PRICE: \$



Lot 52: Wormbete Libby S132 (P)



Lot 53: Wormbete Freda S113 (PP)

54

WORMBETE BELLE S38 (PP)

HH

BORN: 21.07.2021

ID NO: AGOPS038

HPS: Homo Polled

COLOUR: Red

EYE FIG: 100/100

GRADE: Pure

- GLEN ANTHONY Y-ARTA AY02
 - WOONALLEE LAS VEGAS
 - WOONALLEE KATHIE B111
- SIRE: WORMBETE PARLIAMENTARIAN P185 (P) (ET)**
- BULLOCKHILLS GLADIATOR
 - WORMBETE MISHKA K57
 - WORMBETE DIANA

- WORMBETE GEELONG
 - WORMBETE JACKAROO J64
 - WORMBETE JUDY E62
- DAM: WORMBETE BELLE N99 (P)**
- CALLENDALE FRANK
 - WORMBETE BELLE J102
 - WORMBETE BAPTISTA B93

F	R	F	R	SCROTAL
6	5	5	5	
MUSCLE		SHEATH		TEMP
4	5			2

EBV	CALV EASE		BIRTH		GROWTH				FERT	CARCASE					INDEXES			
	DIR	DTRS	GL	BW	200	400	600	MILK	SS	EMA	RIB	RUMP	RBY	IMF	DM	EM	NT	VT
Acc	+3.3	+3.4	-0.4	+1.7	+19	+31	+45	+12	+0.4	+2.5	+0.1	+0.4	+1.4	-0.8	+44	+54	+29	+41

Traits Observed:

A Parliamentarian daughter with length, balance and refinement. Appealing to the eye with body goggles and from a highly valued maternal line. HOMOZYGOUS POLLED.

PURCHASER:

PRICE: \$

55

WORMBETE FIFI S44 (PP) (AI)

HH

BORN: 22.07.2021

ID NO: AGOPS044

HPS: Homo Polled

COLOUR: Dark Red

EYE FIG: 100/100

GRADE: Pure

- WORMBETE DUGALD
 - WORMBETE GEELONG
 - WORMBETE DAKOTA
- SIRE: WORMBETE NOBLEMAN N28 (PP) (AI)**
- LRX HP ROCKET 23Y
 - WORMBETE JUDY L17
 - WORMBETE JUDY E62

- BULLOCKHILLS GLADIATOR
 - WORMBETE LEONARDO L108
 - WORMBETE DEMI
- DAM: WORMBETE FIFI Q44 (PP)**
- DOUBLE BAR D SPITFIRE 20X
 - WORMBETE FIFI N6
 - WORMBETE FIFI J55

F	R	F	R	SCROTAL
5	5	5	5	
MUSCLE		SHEATH		TEMP
5	5			2

EBV	CALV EASE		BIRTH		GROWTH				FERT	CARCASE					INDEXES			
	DIR	DTRS	GL	BW	200	400	600	MILK	SS	EMA	RIB	RUMP	RBY	IMF	DM	EM	NT	VT
Acc	-5.2	-4.5	+1.2	+1.8	+14	+29	+37	+9	+0.6	+3.2	-0.5	-0.3	+1.8	-0.6	+19	+9	+17	+19

Traits Observed: GL BWT 400 SS FAT EMA IMF DOC

Clean and very refined through the front end displaying femininity, dark hooves, body goggles and a rich red coat. Impeccable structure and high marks for EMA and Retail Beef Yield. Out of a first calving heifer. HOMOZYGOUS POLLED.

PURCHASER:

PRICE: \$

56

WORMBETE BELLE S147 (PP)

HH

BORN: 08.09.2021

ID NO: AGOPS147

HPS: Homo Polled

COLOUR: Red

EYE FIG: 100/100

GRADE: Pure

- GLEN ANTHONY Y-ARTA AY02
 - WOONALLEE LAS VEGAS
 - WOONALLEE KATHIE B111
- SIRE: WORMBETE PARLIAMENTARIAN P185 (P) (ET)**
- BULLOCKHILLS GLADIATOR
 - WORMBETE MISHKA K57
 - WORMBETE DIANA

- WATERFRONT ATLANTIS A42
 - WORMBETE DUGALD
 - WORMBETE QUEENIE Q125
- DAM: WORMBETE BELLE H55 (P)**
- TRIJENA XING
 - WORMBETE DARA
 - WORMBETE N012

F	R	F	R	SCROTAL
5	6	5	5	
MUSCLE		SHEATH		TEMP
4	5			2

EBV	CALV EASE		BIRTH		GROWTH				FERT	CARCASE					INDEXES			
	DIR	DTRS	GL	BW	200	400	600	MILK	SS	EMA	RIB	RUMP	RBY	IMF	DM	EM	NT	VT
Acc	+0.1	+1.5	-1.2	+1.5	+14	+25	+32	+8	-0.1	+2.0	-0.6	-0.4	+1.5	-0.5	+30	+28	+18	+27

Traits Observed: BWT 400 SS FAT EMA IMF DOC

A moderately framed heifer showing the structure and ingredients of her proven dam H55. Another long bodied, wedge shaped female with a soft skin who tracks beautifully on dark hooves. HOMOZYGOUS POLLED.

PURCHASER:

PRICE: \$

57

WORMBETE FIFI S93 (H)

BORN: 03.08.2021

ID NO: AGOPS093

HPS: Dehorned

COLOUR: Red

EYE PIG: 90/95

GRADE: Pure

- GLEN ANTHONY Y-ARTA AY02
 - WOONALLEE LAS VEGAS
 - WOONALLEE KATHIE B111
SIRE: WORMBETE PRESIDENT P181 (P) (ET)
 - BULLOCKHILLS GLADIATOR
 - WORMBETE MISHKA K57
 - WORMBETE DIANA

- VIRGINIA MAXIMUS
 - ANCHOR D RAPTOR 392C
 - ANCHOR D ZILEY 392Z
DAM: WORMBETE P157 (S) (AI)
 - BULLOCKHILLS GLADIATOR
 - WORMBETE FIFI L103
 - WORMBETE FIFI E108

F	R	F	R	SCROTAL
6	5	5	5	
				MUSCLE
5	5			SHEATH
				TEMP
				2

EBV	CALV EASE		BIRTH		GROWTH				FERT	CARCASE					INDEXES			
	DIR	DTRS	GL	BW	200	400	600	MILK	SS	EMA	RIB	RUMP	RBY	IMF	DM	EM	NT	VT
Acc	35%	29%	43%	67%	62%	66%	59%	45%	47%	43%	59%	58%	52%	-0.2	+39	+51	+30	+38

Traits Observed: BWT 400 SS FAT EMA IMF DOC

A soft, well fleshed heifer who stands on dark hooves and impeccable legs. A really interesting pedigree with her maternal half brother retained in 2021 as a cover sire for our traditional R heifers. His first calves are on the ground with great success. Dehorned.

PURCHASER:

PRICE: \$

58

WORMBETE BEATRIX S133 (H)

BORN: 27.08.2021

ID NO: AGOPS133

HPS: Dehorned

COLOUR: Red

EYE PIG: 100/100

GRADE: Pure

- GLEN ANTHONY Y-ARTA AY02
 - WOONALLEE LAS VEGAS
 - WOONALLEE KATHIE B111
SIRE: WORMBETE PARLIAMENTARIAN P185 (P) (ET)
 - BULLOCKHILLS GLADIATOR
 - WORMBETE MISHKA K57
 - WORMBETE DIANA

- WOONALLEE BHR TORNADO
 - BULLOCKHILLS GLADIATOR
 - WOONALLEE ASHANTE E202
DAM: WORMBETE BEATRIX K49
 - WOONALLEE CLINICAL C71
 - WORMBETE BEATRIX H21
 - WORMBETE BEATRIX C67

F	R	F	R	SCROTAL
5	5	5	5	
				MUSCLE
5	5			SHEATH
				TEMP
				2

EBV	CALV EASE		BIRTH		GROWTH				FERT	CARCASE					INDEXES			
	DIR	DTRS	GL	BW	200	400	600	MILK	SS	EMA	RIB	RUMP	RBY	IMF	DM	EM	NT	VT
Acc	36%	34%	40%	57%	59%	65%	59%	42%	46%	42%	59%	58%	53%	50%	+24	+19	+21	+30

Traits Observed: 400 SS FAT EMA IMF DOC

A moderately framed heifer with impeccable structure and Retail Beef Yield EBV in the top 1% and EMA in the top 25%. Dehorned.

PURCHASER:

PRICE: \$



Lot 58: Wormbete Beatrix S133



Lot 59: Wormbete Kirsty S28 (P) (AI)

59

WORMBETE KIRSTY S28 (P) (AI)

HH

BORN: 20.07.2021

ID NO: AGOPS028

HPS: Hetero Polled

COLOUR: Dark Red

EYE FIG: 100/100

GRADE: Pure

- VIRGINIA WALKER 97W
- SIBELLE DIRTY HARRY 25Z
- SIBELLE GOLDA

- WORMBETE GEELONG
- WORMBETE JACKAROO J64
- WORMBETE JUDY E62

SIRE: PHS BANK ROLL 245B (P)

- BLI WARLORD 915W
- PHS YUMA
- FGAF PRECIOUS THING 402T

DAM: WORMBETE KIRSTY Q50 (PP)

- GLEN ANTHONY Y-ARTA AY02
- WORMBETE KIRSTY M9
- WORMBETE KIRSTY J84

F	R	F	R	SCROTAL
6	5	6	5	
MUSCLE		SHEATH		TEMP
5	5			2

EBV	CALV EASE		BIRTH		GROWTH				FERT	CARCASE					INDEXES			
	DIR	DTRS	GL	BW	200	400	600	MILK	SS	EMA	RIB	RUMP	RBY	IMF	DM	EM	NT	VT
Acc	+4.4	+2.4	-1.1	+0.6	+17	+24	+30	+7	+0.6	+4.0	-1.4	-1.9	+2.7	-0.5	+34	+36	+20	+41

Traits Observed: GL BWT 400 SS FAT EMA IMF DOC

An appealing Bank Roll heifer expressing a strong muscle pattern yet maintaining femininity and ease of movement. EMA in top 10% and Retail Beef Yield in top 1%. Out of a homozygous polled first calving heifer from a very strong female line.

PURCHASER:

PRICE: \$

60

WORMBETE NOLA S114 (P)

HH

BORN: 12.08.2021

ID NO: AGOPS114

HPS: Hetero Polled

COLOUR: Red

EYE FIG: 100/100

GRADE: Pure

- SIBELLE DIRTY HARRY 25Z
- PHS BANK ROLL 345B
- PHS YUMA

- WOONALLEE GLADIATOR
- WOONALLEE CLINICAL C71
- WOONALLEE JULANI A38

SIRE: WORMBETE PRIME MINISTER P22 (PP) (AI)

- LRX HP ROCKET 23Y
- WORMBETE JUDY L17
- WORMBETE JUDY E62

DAM: WORMBETE NOLA G71

- BANDEEKA U. POPPINS
- WORMBETE XELA
- WORMBETE NOLA

F	R	F	R	SCROTAL
5	5	5	6	
MUSCLE		SHEATH		TEMP
4	5			2

EBV	CALV EASE		BIRTH		GROWTH				FERT	CARCASE					INDEXES			
	DIR	DTRS	GL	BW	200	400	600	MILK	SS	EMA	RIB	RUMP	RBY	IMF	DM	EM	NT	VT
Acc	-1.1	+0.4	+0.1	+1.5	+18	+25	+37	+9	+0.6	+2.4	-0.5	-0.4	+1.0	+0.3	+27	+35	+19	+29

Traits Observed: BWT 400 SS FAT EMA IMF DOC

A well marked, eye patched heifer with plenty of loose skin who steps out on strong dark hooves. Out of a consistent dam who has gelled well with Prime Minister.

PURCHASER:

PRICE: \$

61

WORMBETE KATE S86 (P)

HH

BORN: 02.08.2021

ID NO: AGOPS086

HPS: Hetero Polled

COLOUR: Dark Red

EYE FIG: 100/100

GRADE: Pure

- GLEN ANTHONY Y-ARTA AY02
- WOONALLEE LAS VEGAS
- WOONALLEE KATHIE B111

- CORINDADOWNS ACUTE
- CALLENDALE FRANK
- CALLENDALE XAONON

SIRE: WORMBETE PARLIAMENTARIAN P185 (P) (ET)

- BULLOCKHILLS GLADIATOR
- WORMBETE MISHKA K57
- WORMBETE DIANA

DAM: WORMBETE KATE L89 (P)

- VINTAGE CENTAUR
- WORMBETE KATE E79
- WORMBETE Z016

F	R	F	R	SCROTAL
6	5	5	5	
MUSCLE		SHEATH		TEMP
5	5			1

EBV	CALV EASE		BIRTH		GROWTH				FERT	CARCASE					INDEXES			
	DIR	DTRS	GL	BW	200	400	600	MILK	SS	EMA	RIB	RUMP	RBY	IMF	DM	EM	NT	VT
Acc	-1.5	-0.6	+0.3	+1.8	+15	+22	+29	+7	+0.2	+3.0	+0.4	+0.8	+1.5	-0.8	+26	+20	+18	+28

Traits Observed: BWT 400 SS FAT EMA IMF DOC

A soft, really easy fleshing heifer with thickness and a great outlook. A lovely nature and moderate frame.

PURCHASER:

PRICE: \$



Wormbete Parliamentarian P185 (P) (ET) (AI)



Lancaster LCS Powerful P333 (PP) (ET) (B)



TNT Tanker U263 (PP) (B)



Wormbete President P181 (P) (ET) (AI)



Wormbete Prime Minister P22 (PP) (AI)



Murdeduke Quarterback Q011 (Angus)



Wormbete N160 (PP) (ET) (AI) (B)



Sunny Valley Canon 86E (PP)

REFERENCE SIRES

REFERENCE SIRE	CALV			BIRTH			GROWTH				FERT		CARCASE				INDEXES			
	CE	GL	BW	200D	400D	600D	MILK	SS	EMA	RIB	RUMP	RBY	IMF	DM	EM	NT	VT			
SIMMENTAL AUSTRALIA EBV'S																				
SUNNY VALLEY CANON	-6.0	+1.4	+1.8	+24	+33	+35	+9	+0.4	+3.4	+0.2	-0.1	+0.5	+0.5	+22	+15	+14	+26			
WORMBETE PRESIDENT	-3.7	-0.5	+2.5	+23	+39	+57	+11	+0.7	+3.4	+0.7	+1.4	+1.9	-1.0	+43	+49	332	+39			
WORMBETE PRIME MINISTER	-0.3	-0.4	+0.4	+16	+22	+33	+9	+0.3	+3.8	-0.4	-0.7	+1.5	+0.0	+27	+31	+19	+30			
WORMBETE P'MENTARIAN	-3.8	-0.4	+3.2	+24	+40	+60	+11	+0.4	+2.0	+1.0	+1.8	+1.0	-0.6	+42	+53	+33	+37			
PHS BANK ROLL 345B	+3.3	-0.3	-0.6	+16	+19	+20	+5	+0.9	+5.2	-1.5	-2.3	+2.9	-0.2	+28	+25	+15	+39			
WORMBETE N160	+8.7	-3.1	-2.7	+18	+35	+39	-3	-0.4	+1.0	-1.0	-2.9	-0.1	+0.9	+45	+66	+23	+36			
LANCASTER LCS POWERFUL	+3.7	-0.7	+0.3	+25	+54	+55	+6	+1.2	+3.6	+0.4	-0.8	+0.4	+0.5	+58	+69	+34	+46			
TNT TANKER U236	+2.6	-3.4	+0.7	+33	+60	+66	+8	+0.9	+4.7	+0.2	-1.2	+0.3	+0.1	+70	+90	+36	+53			
WORMBETE MILLENIUM	+3.9	-3.7	+1.2	+20	+36	+51	+7	+1.9	+2.7	-0.9	-0.9	+1.4	-0.1	+43	+58	+31	+41			
CHAMPS BRAVO	+10.5	-1.2	-1.0	+14	+22	+13	+9	-1.3	+4.5	-0.1	-0.3	+2.1	-0.6	+46	+39	+20	+48			
LANCASTER MAGNUM Q202	+3.8	-2.2	-0.7	+25	+44	+46	+6	+1.4	+3.4	+1.4	+0.3	-0.7	+0.8	+53	+67	+30	+44			
ANGUS AUSTRALIA EBV'S**																				
MURDEDUKE QUARTERBACK	+7.6	-10.5	+2.9	+55	+107	+139	+28	+4.0	+7.2	+1.4	+2.0	-1.4	+4.5							

** Simmental Australia and Angus Australia EBV's are Unable to be Compared

Independent Breeding Services

Provide the following Services

Artificial Insemination

Bull semen evaluations

Semen Collection & testing

Liquid Nitrogen deliveries

All AI Supplies



Freeze Branding

Semen Storage

Semen Shipping

Semen Purchases

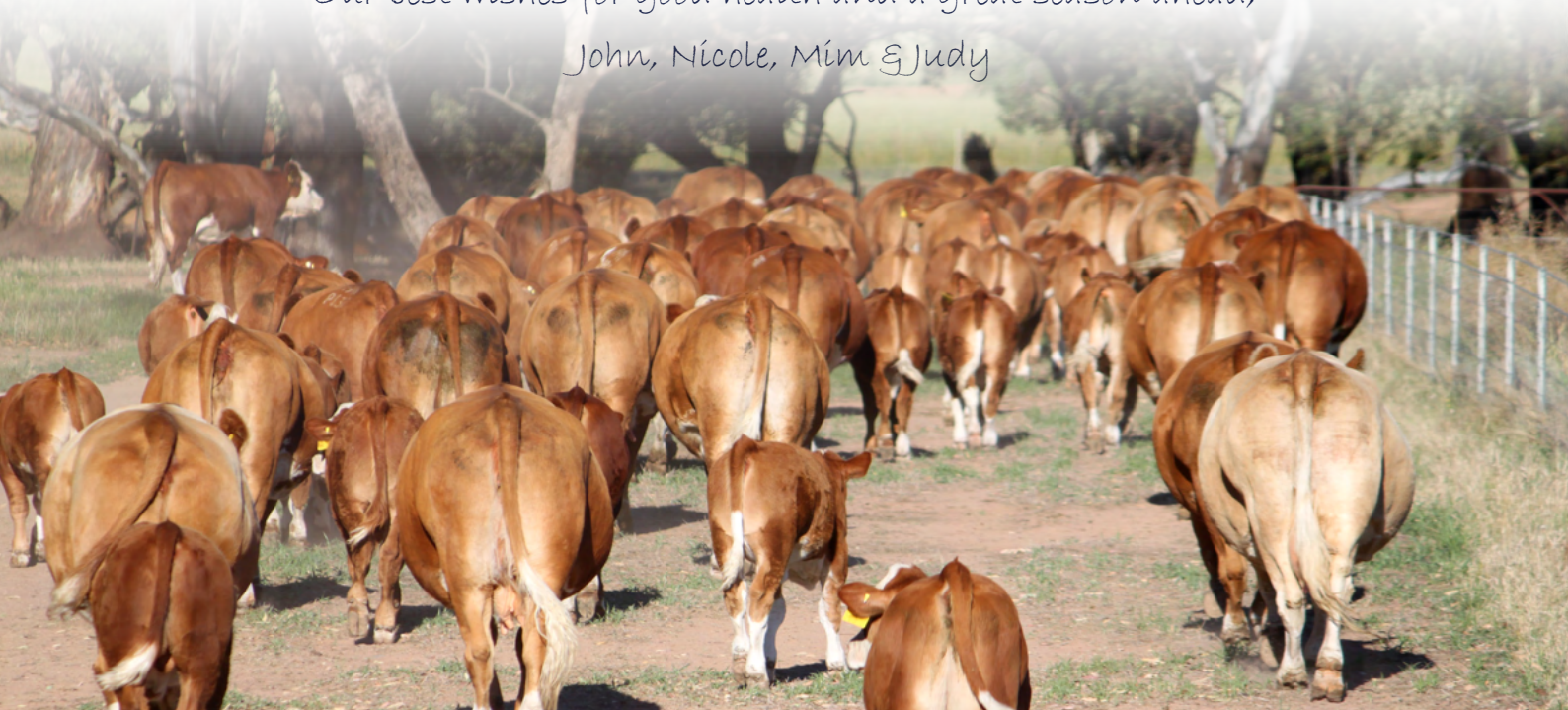
Geoff & Heather Bush

61 Rodeo Drive, Cootamundra

Phone: 0428 423 221, email: ghb.glenholme@bigpond.com

NOTES

Thank you for attending the sale, whether in person or online.
Our best wishes for good health and a great season ahead,
John, Nicole, Mim & Judy



LOT 20
WORMBETE
SOVEREIGN S76 (P)



LOT 1
WORMBETE
SULTAN S20 (PP)



LOT 21
WORMBETE
SCOTCH WHISKEY (PP)



Access The Advantage....Sooner

The logo consists of the letters 'HWH' in a bold, white, sans-serif font. The 'H' and 'H' are connected at the top, and the 'W' is formed by two 'V' shapes. A horizontal orange line is positioned below the logo.

HWH

Contact

John & Nicole Hopkins

“Allawah” ILLABO NSW 2590

Phone: 0427 102 748

Email: hopkinspastoral@bigpond.com

www.wormbetesimmentals.com.au